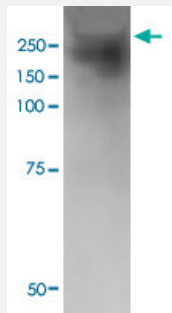


Notch1 monoclonal antibody, clone S253-32 (APC)

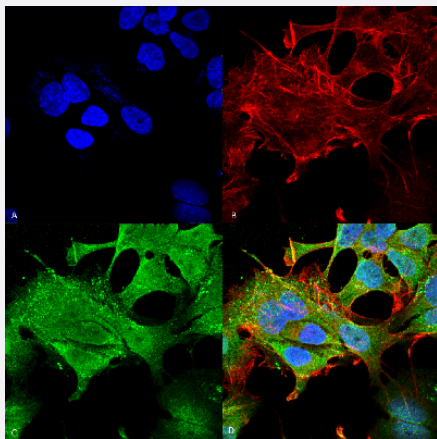
Catalog # MAB17046 Size 100 ug

Applications



Western Blot (Tissue lysate)

Western Blot analysis of rat brain membrane lysate with Notch1 monoclonal antibody, clone S253-32 (APC) (Cat # MAB17046).



Immunocytochemistry

Immunocytochemical staining of SK-N-BE with Notch1 monoclonal antibody, clone S253-32 (APC) (Cat # MAB17046). (A) DAPI (blue) nuclear stain (B) Phalloidin Texas Red F-Actin stain (C) Notch1 Antibody and (D) Composite.

Specification

Product Description	Mouse monoclonal antibody raised against partial recombinant mouse Notch1.
Immunogen	Recombinant protein corresponding to amino acids 20-216 at N-terminus of mouse Notch1.
Host	Mouse
Reactivity	Human, Mouse, Rat
Form	Liquid

Conjugation	APC
Purification	Protein G purification
Isotype	IgG1
Recommend Usage	Immunocytochemistry Immunofluorescence Western Blot (1:1000) The optimal working dilution should be determined by the end user.
Storage Buffer	In PBS, pH 7.4 (50% glycerol, 0.09% sodium azide).
Storage Instruction	Store at -20°C.
Note	This product contains sodium azide: a POISONOUS AND HAZARDOUS SUBSTANCE which should be handled by trained staff only.

Applications

- Western Blot (Tissue lysate)

Western Blot analysis of rat brain membrane lysate with Notch1 monoclonal antibody, clone S253-32 (APC) (Cat # MAB17046).

- Immunocytochemistry

Immunocytochemical staining of SK-N-BE with Notch1 monoclonal antibody, clone S253-32 (APC) (Cat # MAB17046). (A) DAPI (blue) nuclear stain (B) Phalloidin Texas Red F-Actin stain (C) Notch1 Antibody and (D) Composite.

- Immunofluorescence

Gene Info — Notch1

Entrez GeneID	18128
Protein Accession#	Q01705
Gene Name	Notch1
Gene Alias	9930111A19Rik, Mis6, Tan1, lin-12
Gene Description	Notch gene homolog 1 (Drosophila)
Gene Ontology	Hyperlink
Other Designations	Notch 1 OTTMUSP00000013754 major type A protein transmembrane receptor Notch1