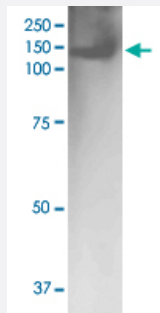


# Bcan monoclonal antibody, clone S294A-6 (APC)

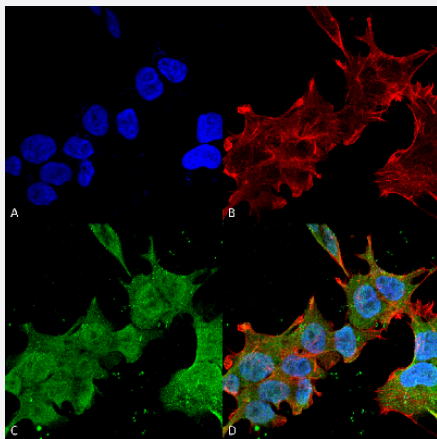
Catalog # MAB17044      Size 100 ug

## Applications



### Western Blot (Tissue lysate)

Western Blot analysis of rat brain membrane lysate with Bcan monoclonal antibody, clone S294A-6 (APC) (Cat # MAB17044).



### Immunocytochemistry

Immunocytochemical staining of SK-N-BE with Bcan monoclonal antibody, clone S294A-6 (APC) (Cat # MAB17044). (A) DAPI (blue) nuclear stain (B) Phalloidin Texas Red F-Actin stain (C) Bcan Antibody and (D) Composite.

## Specification

<b>Product Description</b>	Mouse monoclonal antibody raised against partial recombinant rat Bcan.
<b>Immunogen</b>	Recombinant protein corresponding to amino acids 219-655 of rat Bcan.
<b>Host</b>	Mouse
<b>Reactivity</b>	Human, Rat
<b>Form</b>	Liquid

Conjugation	APC
Purification	Protein G purification
Isotype	IgG2b
Recommend Usage	Immunocytochemistry Immunofluorescence Western Blot (1:1000) The optimal working dilution should be determined by the end user.
Storage Buffer	In PBS, pH 7.4 (50% glycerol, 0.09% sodium azide).
Storage Instruction	Store at -20°C.
Note	This product contains sodium azide: a POISONOUS AND HAZARDOUS SUBSTANCE which should be handled by trained staff only.

## Applications

- Western Blot (Tissue lysate)

Western Blot analysis of rat brain membrane lysate with Bcan monoclonal antibody, clone S294A-6 (APC) (Cat # MAB17044).

- Immunocytochemistry

Immunocytochemical staining of SK-N-BE with Bcan monoclonal antibody, clone S294A-6 (APC) (Cat # MAB17044). (A) DAPI (blue) nuclear stain (B) Phalloidin Texas Red F-Actin stain (C) Bcan Antibody and (D) Composite.

- Immunofluorescence

## Gene Info — Bcan

Entrez GeneID	<a href="#">25393</a>
Protein Accession#	<a href="#">P55068</a>
Gene Name	Bcan
Gene Alias	ALPBRE
Gene Description	brevican
Gene Ontology	<a href="#">Hyperlink</a>
Other Designations	brevican (brain specific proteoglycan in the aggrecan family)