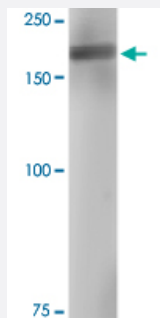


Abcc8 monoclonal antibody, clone S289-16 (APC)

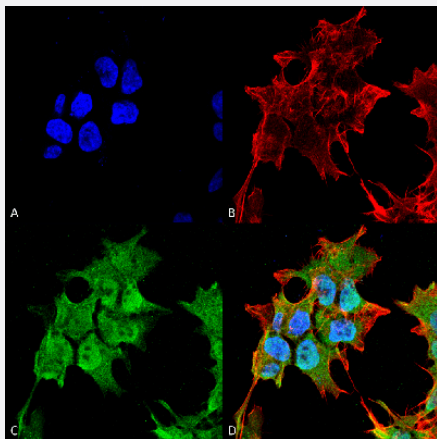
Catalog # MAB17022 Size 100 ug

Applications



Western Blot (Tissue lysate)

Western Blot analysis of rat brain membrane lysate with Abcc8 monoclonal antibody, clone S289-16 (APC) (Cat # MAB17022).



Immunocytochemistry

Immunocytochemical staining of SK-N-BE with Abcc8 monoclonal antibody, clone S289-16 (APC) (Cat # MAB17022). (A) DAPI (blue) nuclear stain (B) Phalloidin Texas Red F-Actin stain (C) Abcc8 Antibody and (D) Composite.

Specification

| | |
|----------------------------|--|
| Product Description | Mouse monoclonal antibody raised against partial recombinant rat Abcc8. |
| Immunogen | Recombinant protein corresponding to amino acids 1548-1582 at C-terminus of rat Abcc8. |
| Host | Mouse |
| Reactivity | Human, Rat |
| Form | Liquid |

| | |
|---------------------|---|
| Conjugation | APC |
| Purification | Protein G purification |
| Isotype | IgG1 |
| Recommend Usage | Immunocytochemistry (1:100) Immunofluorescence (1:100) Immunohistochemistry (Formalin/PFA-fixed paraffin-embedded sections) (1:1000) Western Blot (1:1000) The optimal working dilution should be determined by the end user. |
| Storage Buffer | In PBS, pH 7.4 (50% glycerol, 0.09% sodium azide). |
| Storage Instruction | Store at -20°C. |
| Note | This product contains sodium azide: a POISONOUS AND HAZARDOUS SUBSTANCE which should be handled by trained staff only. |

Applications

- Western Blot (Tissue lysate)

Western Blot analysis of rat brain membrane lysate with Abcc8 monoclonal antibody, clone S289-16 (APC) (Cat # MAB17022).

- Immunohistochemistry (Formalin/PFA-fixed paraffin-embedded sections)

- Immunocytochemistry

Immunocytochemical staining of SK-N-BE with Abcc8 monoclonal antibody, clone S289-16 (APC) (Cat # MAB17022). (A) DAPI (blue) nuclear stain (B) Phalloidin Texas Red F-Actin stain (C) Abcc8 Antibody and (D) Composite.

- Immunofluorescence

Gene Info — Abcc8

| | |
|--------------------|---|
| Entrez GeneID | 25559 |
| Protein Accession# | Q09429 |
| Gene Name | Abcc8 |
| Gene Alias | Sur, Sur1 |
| Gene Description | ATP-binding cassette, sub-family C (CFTR/MRP), member 8 |

Gene Ontology[Hyperlink](#)**Gene Summary**

sub-family C (CFTR/MRP)

Other Designations

ATP-binding cassette subfamily C (CFTR/MRP) member 8|ATP-binding cassette, subfamily C (CFTR/MRP), member 8|Sulfonylurea receptor

Publication Reference

- [KATP channels as molecular sensors of cellular metabolism.](#)

Colin G Nichols.

Nature 2006 Mar; 440(7083):470.