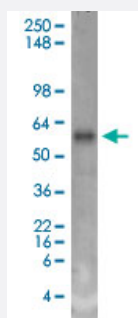


SLC18A3 monoclonal antibody, clone S6-38 (FITC)

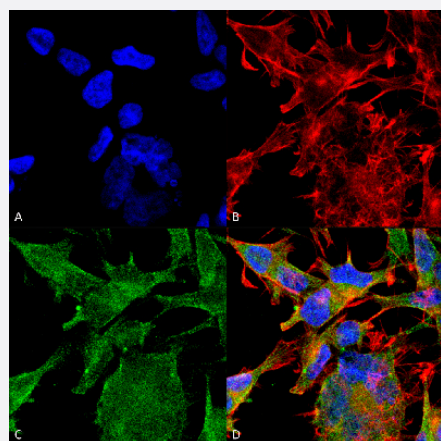
Catalog # MAB16986 Size 100 ug

Applications



Western Blot (Tissue lysate)

Western Blot analysis of rat brain membrane lysate with SLC18A3 monoclonal antibody, clone S6-38 (FITC) (Cat # MAB16986).



Immunocytochemistry

Immunocytochemical staining of SK-N-BE with SLC18A3 monoclonal antibody, clone S6-38 (FITC) (Cat # MAB16986). (A) DAPI (blue) nuclear stain (B) Phalloidin Texas Red F-Actin stain (C) SLC18A3 Antibody and (D) Composite.

Specification

Product Description	Mouse monoclonal antibody raised against synthetic peptide of human SLC18A3.
Immunogen	A synthetic peptide corresponding to amino acids 521-532 of human SLC18A3.
Host	Mouse
Reactivity	Human, Rat
Form	Liquid

Conjugation	FITC
Purification	Protein G purification
Isotype	IgG1
Recommend Usage	Immunocytochemistry (1:100) Immunofluorescence (1:100) Immunohistochemistry (Formalin/PFA-fixed paraffin-embedded sections) (1:200) Western Blot (1:1000) The optimal working dilution should be determined by the end user.
Storage Buffer	In PBS, pH 7.4 (50% glycerol, 0.09% sodium azide).
Storage Instruction	Store at -20°C.
Note	This product contains sodium azide: a POISONOUS AND HAZARDOUS SUBSTANCE which should be handled by trained staff only.

Applications

- Western Blot (Tissue lysate)

Western Blot analysis of rat brain membrane lysate with SLC18A3 monoclonal antibody, clone S6-38 (FITC) (Cat # MAB16986).

- Immunohistochemistry (Formalin/PFA-fixed paraffin-embedded sections)

- Immunocytochemistry

Immunocytochemical staining of SK-N-BE with SLC18A3 monoclonal antibody, clone S6-38 (FITC) (Cat # MAB16986). (A) DAPI (blue) nuclear stain (B) Phalloidin Texas Red F-Actin stain (C) SLC18A3 Antibody and (D) Composite.

- Immunofluorescence

Gene Info — SLC18A3

Entrez GeneID	6572
Protein Accession#	Q16572
Gene Name	SLC18A3
Gene Alias	MGC12716, VACHT
Gene Description	solute carrier family 18 (vesicular acetylcholine), member 3

Omim ID	600336
Gene Ontology	Hyperlink
Gene Summary	This gene is a member of the vesicular amine transporter family. The encoded transmembrane protein transports acetylcholine into secretory vesicles for release into the extracellular space. Acetylcholine transport utilizes a proton gradient established by a vacuolar ATPase. This gene is located within the first intron of the choline acetyltransferase gene. [provided by RefSeq]
Other Designations	OTTHUMP00000019582 solute carrier family 18, member 3 vesicular acetylcholine transporter

Publication Reference

- [Molecular analysis of vesicular amine transporter function and targeting to secretory organelles.](#)

Erickson JD, Varoqui H.

FASEB Journal 2000 Dec; 14(15):2450.

Application: IF, Rat, PC-12

Disease

- [Alzheimer disease](#)
- [Cerebral Amyloid Angiopathy](#)
- [Genetic Predisposition to Disease](#)
- [Neuroblastoma](#)
- [Tobacco Use Disorder](#)