

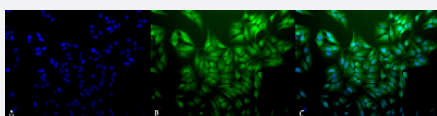
Ubiquitin monoclonal antibody, clone 5B9-B3 (APC)

Catalog # MAB16964

Size 200 ug

Applications

Immunocytochemistry



Immunocytochemical staining of HeLa cells with Ubiquitin monoclonal antibody, clone 5B9-B3 (APC) (Cat # MAB16964). (A) DAPI (blue) nuclear stain. (B) Anti-Ubiquitin Antibody. (C) Composite.

Specification

| | |
|----------------------------|---|
| Product Description | Mouse monoclonal antibody raised against bovine Ubiquitin. |
| Immunogen | Native bovine ubiquitin, conjugated to KLH. |
| Host | Mouse |
| Reactivity | Bovine, Human |
| Form | Liquid |
| Conjugation | APC |
| Purification | Protein G purification |
| Isotype | IgG2a, kappa |
| Recommend Usage | ELISA Immunocytochemistry (1:100) Immunofluorescence (1:100) Western Blot (1:1000) The optimal working dilution should be determined by the end user. |
| Storage Buffer | In PBS, pH 7.4 (50% glycerol, 0.09% sodium azide). |

Storage Instruction

Store at -20°C.

Note

This product contains sodium azide: a POISONOUS AND HAZARDOUS SUBSTANCE which should be handled by trained staff only.

Applications

- Western Blot
- Immunocytochemistry
Immunocytochemical staining of HeLa cells with Ubiquitin monoclonal antibody, clone 5B9-B3 (APC) (Cat # MAB16964). (A) DAPI (blue) nuclear stain. (B) Anti-Ubiquitin Antibody. (C) Composite.
- Immunofluorescence
- Enzyme-linked Immunoabsorbent Assay

Gene Info — LOC281370

Entrez GeneID [281370](#)**Protein Accession#** [P0CG53](#)**Gene Name** LOC281370**Gene Alias** -**Gene Description** polyubiquitin**Gene Ontology** [Hyperlink](#)**Other Designations** -