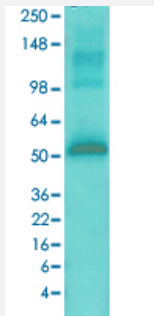


# Camk2a monoclonal antibody, clone 6G9 (APC)

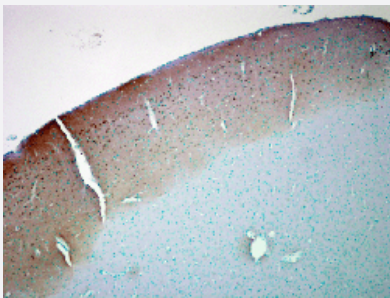
Catalog # MAB16954      Size 100 ug

## Applications



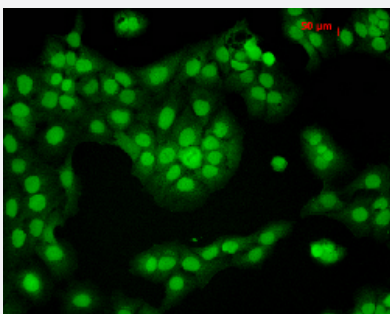
### Western Blot (Tissue lysate)

Western Blot analysis of rat brain membrane lysate with Camk2a monoclonal antibody, clone 6G9 (APC) (Cat # MAB16954).



### Immunohistochemistry (Formalin/PFA-fixed paraffin-embedded sections)

Immunohistochemical staining (Formalin-fixed paraffin-embedded sections) of human colon cancer with Camk2a monoclonal antibody, clone 6G9 (APC) (Cat # MAB16954).



### Immunocytochemistry

Immunocytochemical staining of HaCaT with Camk2a monoclonal antibody, clone 6G9 (APC) (Cat # MAB16954).

## Specification

### Product Description

Mouse monoclonal antibody raised against rat Camk2a.

### Immunogen

Partially purified rat Camk2a.

Host	Mouse
Reactivity	Rat
Form	Liquid
Conjugation	APC
Purification	Protein G purification
Isotype	IgG1
Recommend Usage	ELISA Immunocytochemistry (1:50) Immunofluorescence (1:50) Immunohistochemistry (Formalin/PFA-fixed paraffin-embedded sections) (1:2000) Immunoprecipitation Radioimmunoassay Western Blot (1:10000) The optimal working dilution should be determined by the end user.
Storage Buffer	In PBS, pH 7.4 (50% glycerol, 0.09% sodium azide).
Storage Instruction	Store at -20°C.
Note	This product contains sodium azide: a POISONOUS AND HAZARDOUS SUBSTANCE which should be handled by trained staff only.

## Applications

- Western Blot (Tissue lysate)

Western Blot analysis of rat brain membrane lysate with Camk2a monoclonal antibody, clone 6G9 (APC) (Cat # MAB16954).

- Immunohistochemistry (Formalin/PFA-fixed paraffin-embedded sections)

Immunohistochemical staining (Formalin-fixed paraffin-embedded sections) of human colon cancer with Camk2a monoclonal antibody, clone 6G9 (APC) (Cat # MAB16954).

- Immunocytochemistry

Immunocytochemical staining of HaCaT with Camk2a monoclonal antibody, clone 6G9 (APC) (Cat # MAB16954).

- Immunofluorescence

- Immunoprecipitation

- Enzyme-linked Immunoabsorbent Assay

- Radioimmunoassay

## Gene Info — Camk2a

Entrez GeneID	<a href="#">25400</a>
Protein Accession#	<a href="#">P11275</a>
Gene Name	Camk2a
Gene Alias	PK2CDD, PKCCD
Gene Description	calcium/calmodulin-dependent protein kinase II alpha
Gene Ontology	<a href="#">Hyperlink</a>
Other Designations	Ca2+/calmodulin-dependent protein kinase II alpha alpha CaM kinase II calcium/calmodulin-dependent protein kinase (CaM kinase) II alpha calcium/calmodulin-dependent protein kinase II alpha subunit

## Publication Reference

- [Calmodulin-dependent kinase II mediates T cell receptor/CD3- and phorbol ester-induced activation of I kappa B kinase.](#)

Hughes K, Edin S, Antonsson A, Grundstrom T.

The Journal of Biological Chemistry 2001 Sep; 276(38):36008.