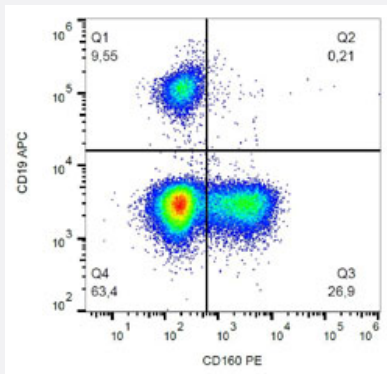


CD160 monoclonal antibody, clone BY55

Catalog # MAB16949 Size 100 ug

Applications



Flow Cytometry

Flow cytometric analysis (surface staining) of human peripheral blood cells with anti-CD160 PE.

Specification

Product Description	Mouse monoclonal antibody raised against human CD160.
Immunogen	Human NK cell line YT2C2.
Host	Mouse
Reactivity	Human
Specificity	This antibody recognizes CD160, a 27 kDa glycoprotein expressed on NK cells, NK-T cells, intestinal intraepithelial lymphocytes, TCR-gamma/delta T cells and a small population of TCR-alpha/beta T cells. It detects both GPI-anchored and transmembrane form of CD160.
Form	Liquid
Purification	Precipitation method and chromatography
Isotype	IgM
Recommend Usage	Flow Cytometry Immunoprecipitation The optimal working dilution should be determined by the end user.

Storage Buffer	In TBS, pH 8.0 (15 mM sodium azide).
Storage Instruction	Store at 4°C. Do not freeze.
Note	This product contains sodium azide: a POISONOUS AND HAZARDOUS SUBSTANCE which should be handled by trained staff only.

Applications

- Flow Cytometry

Flow cytometric analysis (surface staining) of human peripheral blood cells with anti-CD160 PE.

Gene Info — CD160

Entrez GeneID	11126
Gene Name	CD160
Gene Alias	BY55, FLJ46513, NK1, NK28
Gene Description	CD160 molecule
Omim ID	604463
Gene Ontology	Hyperlink

Gene Summary	CD160 is an 27 kDa glycoprotein which was initially identified with the monoclonal antibody BY55 . Its expression is tightly associated with peripheral blood NK cells and CD8 T lymphocytes with cytolytic effector activity. The cDNA sequence of CD160 predicts a cysteine-rich, glycosylphosphatidylinositol-anchored protein of 181 amino acids with a single Ig-like domain weakly homologous to KIR2DL4 molecule. CD160 is expressed at the cell surface as a tightly disulfide-linked multimer . RNA blot analysis revealed CD160 mRNAs of 1.5 and 1.6 kb whose expression was highly restricted to circulating NK and T cells, spleen and small intestine. Within NK cells CD160 is expressed by CD56dimCD16+ cells whereas among circulating T cells its expression is mainly restricted to TCRgd bearing cells and to TCRab+CD8brightCD95+CD56+CD28-CD27-cells. In tissues, CD160 is expressed on all intestinal intraepithelial lymphocytes. CD160 shows a broad specificity for binding to both classical and nonclassical MHC class I molecules. [provided by RefSeq]
--------------	---

Other Designations	CD160 antigen OTTHUMP00000015585 natural killer cell receptor, immunoglobulin superfamily member
--------------------	--

Publication Reference

- [Identification and characterization of a transmembrane isoform of CD160 \(CD160-TM\), a unique activating receptor selectively expressed upon human NK cell activation.](#)

Jerome Giustiniani, Armand Bensussan, and Anne Marie-Cardine.

Journal of Immunology 2009 Jan; 182(1):63.

Application: Flow Cyt, Func, IP, WB-Tr, Human, NK cell line NK92, Jurkat cells

- [BY55/CD160 cannot be considered a cytotoxic marker in cytomegalovirus-specific human CD8\(+\) T cells.](#)

Merino J, Ramírez N, Moreno C, Toledo E, Fernández M, Sánchez-Ibarrola A.

Clinical and Experimental Immunology 2007 Jul; 149(1):87.

Application: Flow Cyt, Human, Human lymphocytes