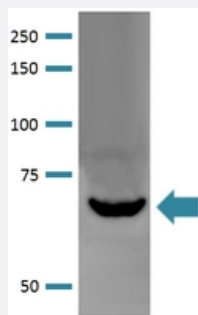


# Lgi1 monoclonal antibody, clone S283-7 (Biotin)

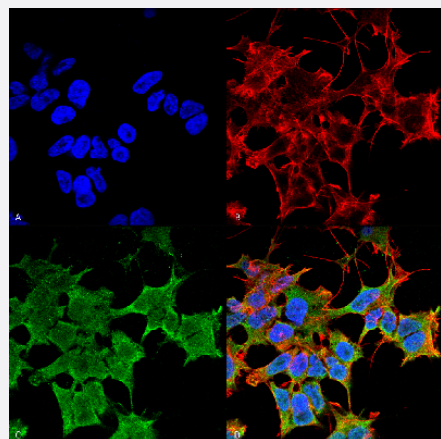
Catalog # MAB16874      Size 100 ug

## Applications



### Western Blot (Tissue lysate)

Western Blot analysis of rat brain membrane lysate with Lgi1 monoclonal antibody, clone S283-7 (Biotin) (Cat # MAB16874).



### Immunocytochemistry

Immunocytochemical staining of SK-N-BE with Lgi1 monoclonal antibody, clone S283-7 (Biotin) (Cat # MAB16874). (A) DAPI (blue) nuclear stain (B) Phalloidin Texas Red F-Actin stain (C) Lgi1 Antibody and (D) Composite.

## Specification

|                            |   |
|----------------------------|---|
| <b>Product Description</b> | Mouse monoclonal antibody raised against partial recombinant mouse Lgi1.                                    |
| <b>Immunogen</b>           | Recombinant protein corresponding to amino acids 37-113 at LRRNT domain and first LRR repeat of mouse Lgi1. |
| <b>Host</b>                | Mouse   |
| <b>Reactivity</b>          | Human, Mouse, Rat   |
| <b>Form</b>                | Liquid  |

|                     |  |
|---------------------|--|
| Conjugation         | Biotin   |
| Purification        | Protein G purification   |
| Isotype             | IgG2a  |
| Recommend Usage     | Immunocytochemistry<br>Immunofluorescence<br>Immunohistochemistry (Formalin/PFA-fixed paraffin-embedded sections)<br>Western Blot (1:1000)<br>The optimal working dilution should be determined by the end user. |
| Storage Buffer      | In PBS, pH 7.4 (50% glycerol, 0.09% sodium azide).   |
| Storage Instruction | Store at -20°C.  |
| Note                | This product contains sodium azide: a POISONOUS AND HAZARDOUS SUBSTANCE which should be handled by trained staff only.   |

## Applications

- Western Blot (Tissue lysate)

Western Blot analysis of rat brain membrane lysate with Lgi1 monoclonal antibody, clone S283-7 (Biotin) (Cat # MAB16874).

- Immunohistochemistry (Formalin/PFA-fixed paraffin-embedded sections)

- Immunocytochemistry

Immunocytochemical staining of SK-N-BE with Lgi1 monoclonal antibody, clone S283-7 (Biotin) (Cat # MAB16874). (A) DAPI (blue) nuclear stain (B) Phalloidin Texas Red F-Actin stain (C) Lgi1 Antibody and (D) Composite.

- Immunofluorescence

## Gene Info — Lgi1

|                    |  |
|--------------------|--|
| Entrez GeneID      | <a href="#">56839</a>                    |
| Protein Accession# | <a href="#">Q9JIA1-1</a>                 |
| Gene Name          | Lgi1                                     |
| Gene Alias         | BB130740                                 |
| Gene Description   | leucine-rich repeat LGI family, member 1 |

## Gene Ontology

[Hyperlink](#)

## Gene Summary

O

## Other Designations

OTTMUSP00000017555|leucine-rich, glioma inactivated 1

## Publication Reference

- [CPA6, FMO2, LIG1, SIAT1 and TNC are differentially expressed in early- and late-stage oral squamous cell carcinoma--a pilot study.](#)

Fialka F, Gruber RM, Hitt R, Opitz L, Brunner E, Schliephake H, Kramer FJ.

Oral Oncology 2008 Oct; 44(10):941.