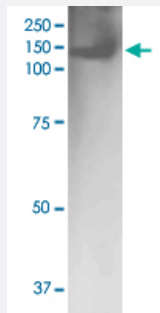


Bcan monoclonal antibody, clone S294A-6 (Biotin)

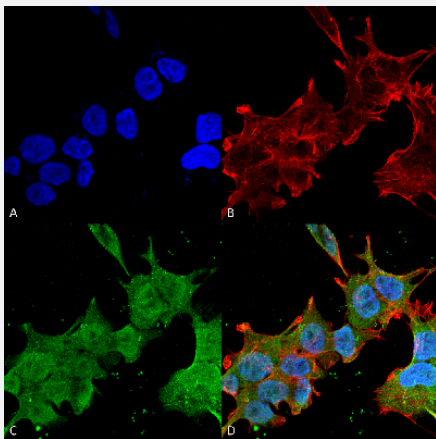
Catalog # MAB16838 Size 100 ug

Applications



Western Blot (Tissue lysate)

Western Blot analysis of rat brain membrane lysate with Bcan monoclonal antibody, clone S294A-6 (Biotin) (Cat # MAB16838).



Immunocytochemistry

Immunocytochemical staining of SK-N-BE with Bcan monoclonal antibody, clone S294A-6 (Biotin) (Cat # MAB16838). (A) DAPI (blue) nuclear stain (B) Phalloidin Texas Red F-Actin stain (C) Bcan Antibody and (D) Composite.

Specification

Product Description	Mouse monoclonal antibody raised against partial recombinant rat Bcan.
Immunogen	Recombinant protein corresponding to amino acids 219-655 of rat Bcan.
Host	Mouse
Reactivity	Human, Rat
Form	Liquid

Conjugation	Biotin
Purification	Protein G purification
Isotype	IgG2b
Recommend Usage	Immunocytochemistry Immunofluorescence Western Blot (1:1000) The optimal working dilution should be determined by the end user.
Storage Buffer	In PBS, pH 7.4 (50% glycerol, 0.09% sodium azide).
Storage Instruction	Store at -20°C.
Note	This product contains sodium azide: a POISONOUS AND HAZARDOUS SUBSTANCE which should be handled by trained staff only.

Applications

- Western Blot (Tissue lysate)

Western Blot analysis of rat brain membrane lysate with Bcan monoclonal antibody, clone S294A-6 (Biotin) (Cat # MAB16838).

- Immunocytochemistry

Immunocytochemical staining of SK-N-BE with Bcan monoclonal antibody, clone S294A-6 (Biotin) (Cat # MAB16838). (A) DAPI (blue) nuclear stain (B) Phalloidin Texas Red F-Actin stain (C) Bcan Antibody and (D) Composite.

- Immunofluorescence

Gene Info — Bcan

Entrez GeneID	25393
Protein Accession#	P55068
Gene Name	Bcan
Gene Alias	ALPBRE
Gene Description	brevican
Gene Ontology	Hyperlink
Other Designations	brevican (brain specific proteoglycan in the aggrecan family)