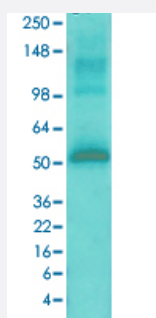


Camk2a monoclonal antibody, clone 6G9 (FITC)

Catalog # MAB16758 Size 100 ug

Applications



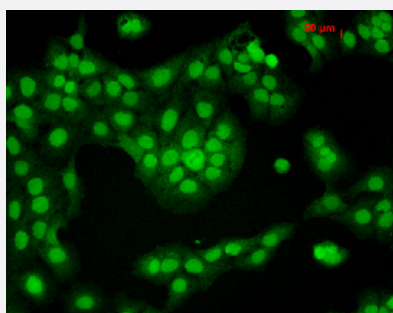
Western Blot (Tissue lysate)

Western Blot analysis of rat brain membrane lysate with Camk2a monoclonal antibody, clone 6G9 (FITC) (Cat # MAB16758).



Immunohistochemistry (Formalin/PFA-fixed paraffin-embedded sections)

Immunohistochemical staining (Formalin-fixed paraffin-embedded sections) of human colon cancer with Camk2a monoclonal antibody, clone 6G9 (FITC) (Cat # MAB16758).



Immunocytochemistry

Immunocytochemical staining of HaCaT with Camk2a monoclonal antibody, clone 6G9 (FITC) (Cat # MAB16758).

Specification

Product Description

Mouse monoclonal antibody raised against rat Camk2a.

Immunogen

Partially purified rat Camk2a.

| | |
|---------------------|--|
| Host | Mouse |
| Reactivity | Rat |
| Form | Liquid |
| Conjugation | FITC |
| Purification | Protein G purification |
| Isotype | IgG1 |
| Recommend Usage | ELISA Immunocytochemistry (1:50) Immunofluorescence (1:50) Immunohistochemistry (Formalin/PFA-fixed paraffin-embedded sections) (1:2000) Immunoprecipitation Radioimmunoassay Western Blot (1:10000) The optimal working dilution should be determined by the end user. |
| Storage Buffer | In PBS, pH 7.4 (50% glycerol, 0.09% sodium azide). |
| Storage Instruction | Store at -20°C. |
| Note | This product contains sodium azide: a POISONOUS AND HAZARDOUS SUBSTANCE which should be handled by trained staff only. |

Applications

- Western Blot (Tissue lysate)

Western Blot analysis of rat brain membrane lysate with Camk2a monoclonal antibody, clone 6G9 (FITC) (Cat # MAB16758).

- Immunohistochemistry (Formalin/PFA-fixed paraffin-embedded sections)

Immunohistochemical staining (Formalin-fixed paraffin-embedded sections) of human colon cancer with Camk2a monoclonal antibody, clone 6G9 (FITC) (Cat # MAB16758).

- Immunocytochemistry

Immunocytochemical staining of HaCaT with Camk2a monoclonal antibody, clone 6G9 (FITC) (Cat # MAB16758).

- Immunofluorescence

- Immunoprecipitation

- Enzyme-linked Immunoabsorbent Assay

- Radioimmunoassay

Gene Info — Camk2a

Entrez GeneID [25400](#)

Protein Accession# [P11275](#)

Gene Name Camk2a

Gene Alias PK2CDD, PKCCD

Gene Description calcium/calmodulin-dependent protein kinase II alpha

Gene Ontology [Hyperlink](#)

Other Designations Ca²⁺/calmodulin-dependent protein kinase II alpha|alpha CaM kinase II|calcium/calmodulin-dependent protein kinase (CaM kinase) II alpha|calcium/calmodulin-dependent protein kinase II alpha subunit

Publication Reference

- [Calmodulin-dependent kinase II mediates T cell receptor/CD3- and phorbol ester-induced activation of I kappa B kinase.](#)

Hughes K, Edin S, Antonsson A, Grundström T.

The Journal of Biological Chemistry 2001 Sep; 276(38):36008.