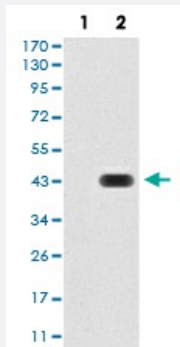


AOF1 monoclonal antibody, clone 5E10C1

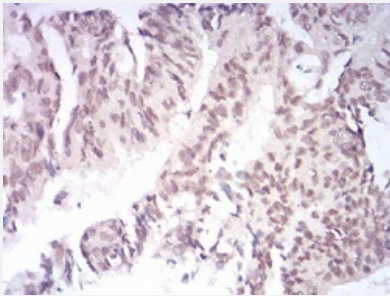
Catalog # MAB16756 Size 100 ug

Applications



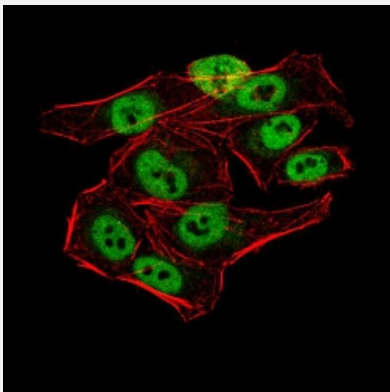
Western Blot (Transfected lysate)

Western blot analysis of Lane 1: HEK293 cell; Lane 2: AOF1-hlgGFc transfected HEK293 cell with AOF1 monoclonal antibody.



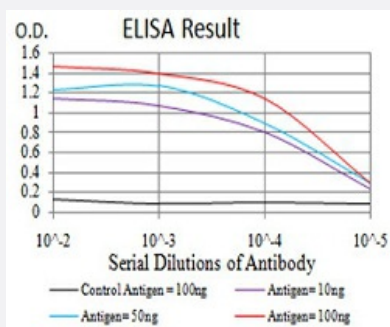
Immunohistochemistry (Formalin/PFA-fixed paraffin-embedded sections)

Immunohistochemical staining of paraffin-embedded rectal cancer tissues with AOF1 monoclonal antibody.



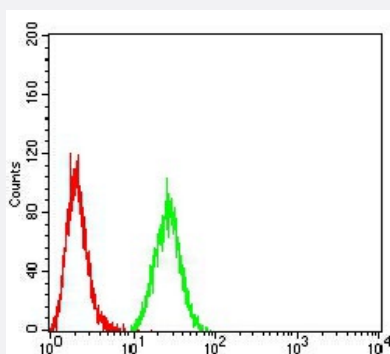
Immunocytochemistry

Immunocytochemical staining of HeLa cells with AOF1 monoclonal antibody (green). DRAQ5 fluorescent DNA dye (blue). Actin filaments labeled with Alexa Fluor-555 phalloidin (red).



Enzyme-linked Immunoabsorbent Assay

ELISA analysis of AOF1 monoclonal antibody, clone 5E10C1.



Flow Cytometry

Flow cytometric analysis of Hela cells with AOF1 monoclonal antibody (green) and negative control (red).

Specification

Product Description	Mouse monoclonal antibody raised against recombinant human AOF1.
Immunogen	Recombinant protein corresponding to amino acid 6-129 of human AOF1 from <i>E. coli</i> .
Host	Mouse
Theoretical MW (kDa)	92
Reactivity	Human
Form	Liquid
Isotype	IgG1
Recommend Usage	ELISA (1:10000) Western Blot (1:500-1:2000) Immunohistochemistry (1:200-1:1000) Immunocytochemistry (1:200-1:1000) Flow Cytometry (1:200-1:400) The optimal working dilution should be determined by the end user.
Storage Buffer	In PBS (0.05% sodium azide).
Storage Instruction	Store at 4°C. For long term storage store at -20°C. Aliquot to avoid repeated freezing and thawing.

Note

This product contains sodium azide: a POISONOUS AND HAZARDOUS SUBSTANCE which should be handled by trained staff only.

Applications

- Western Blot (Transfected lysate)

Western blot analysis of Lane 1: HEK293 cell; Lane 2: AOF1-hlgGfc transfected HEK293 cell with AOF1 monoclonal antibody.

- Immunohistochemistry (Formalin/PFA-fixed paraffin-embedded sections)

Immunohistochemical staining of paraffin-embedded rectal cancer tissues with AOF1 monoclonal antibody.

- Immunocytochemistry

Immunocytochemical staining of Hela cells with AOF1 monoclonal antibody (green). DRAQ5 fluorescent DNA dye (blue). Actin filaments labeled with Alexa Fluor-555 phalloidin (red).

- Enzyme-linked Immunoabsorbent Assay

ELISA analysis of AOF1 monoclonal antibody, clone 5E10C1.

- Flow Cytometry

Flow cytometric analysis of Hela cells with AOF1 monoclonal antibody (green) and negative control (red).

Gene Info — AOF1

Entrez GeneID [221656](#)

Gene Name AOF1

Gene Alias C6orf193, DKFZp686I0412, FLJ33898, FLJ34109, FLJ43328, bA204B7.3, dJ298J15.2

Gene Description amine oxidase (flavin containing) domain 1

Gene Ontology [Hyperlink](#)

Gene Summary flavin containing 1

Other Designations OTTHUMP00000016075|OTTHUMP00000016077|OTTHUMP00000039336|amine oxidase, flavin containing 1