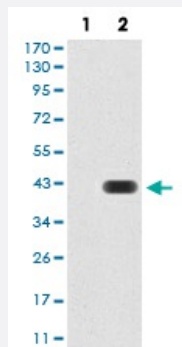


PROM1 monoclonal antibody, clone 2F8C5

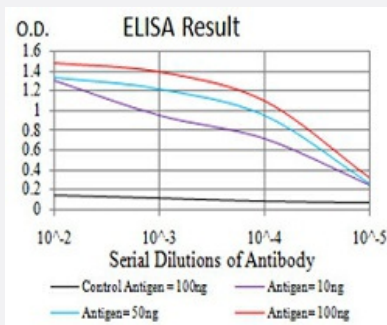
Catalog # MAB16750 Size 100 ug

Applications



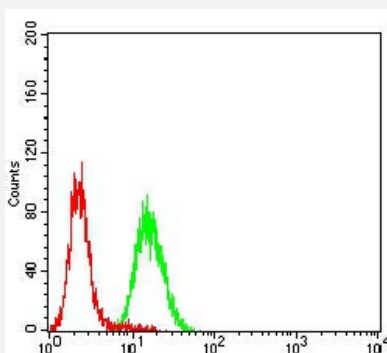
Western Blot (Transfected lysate)

Western blot analysis of Lane 1: HEK293 cell; Lane 2: PROM1-hlgGfC transfected HEK293 cell with PROM1 monoclonal antibody.



Enzyme-linked Immunoabsorbent Assay

ELISA analysis of PROM1 monoclonal antibody, clone 2F8C5.



Flow Cytometry

Flow cytometric analysis of Hela cells with PROM1 monoclonal antibody (green) and negative control (red).

Specification

Product Description

Mouse monoclonal antibody raised against recombinant human PROM1.

Immunogen	Recombinant protein corresponding to amino acid 20-108 of human PROM1 from <i>E. coli</i> .
Host	Mouse
Theoretical MW (kDa)	97.2
Reactivity	Human
Form	Liquid
Isotype	IgG1
Recommend Usage	ELISA (1:10000) Western Blot (1:500-1:2000) Immunohistochemistry Immunocytochemistry Flow Cytometry (1:200-1:400) The optimal working dilution should be determined by the end user.
Storage Buffer	In PBS (0.05% sodium azide).
Storage Instruction	Store at 4°C. For long term storage store at -20°C. Aliquot to avoid repeated freezing and thawing.
Note	This product contains sodium azide: a POISONOUS AND HAZARDOUS SUBSTANCE which should be handled by trained staff only.

Applications

- Western Blot (Transfected lysate)

Western blot analysis of Lane 1: HEK293 cell; Lane 2: PROM1-hlgFc transfected HEK293 cell with PROM1 monoclonal antibody.

- Enzyme-linked Immunoabsorbent Assay

ELISA analysis of PROM1 monoclonal antibody, clone 2F8C5.

- Flow Cytometry

Flow cytometric analysis of Hela cells with PROM1 monoclonal antibody (green) and negative control (red).

Gene Info — PROM1

Entrez GeneID

[8842](#)

Gene Name

PROM1

Gene Alias	AC133, CD133, MSTP061, PROML1, RP41
Gene Description	prominin 1
Omim ID	604365
Gene Ontology	Hyperlink
Gene Summary	<p>This gene encodes a pentaspan transmembrane glycoprotein. The protein localizes to membrane protrusions and is often expressed on adult stem cells, where it is thought to function in maintaining stem cell properties by suppressing differentiation. Mutations in this gene have been shown to result in retinitis pigmentosa and Stargardt disease. Expression of this gene is also associated with several types of cancer. This gene is expressed from at least five alternative promoters that are expressed in a tissue-dependent manner. Multiple transcript variants encoding different isoforms have been found for this gene. [provided by RefSeq]</p>
Other Designations	hProminin hematopoietic stem cell antigen prominin-like 1

Disease

- [Carcinoma](#)
- [Genetic Predisposition to Disease](#)
- [Head and Neck Neoplasms](#)
- [Neoplasms](#)
- [Recurrence](#)
- [Tobacco Use Disorder](#)