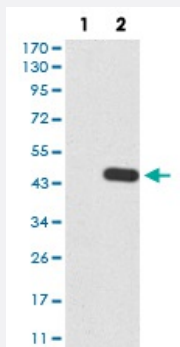


RND3 monoclonal antibody, clone 5C7B6

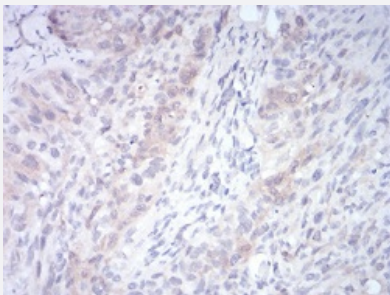
Catalog # MAB16748 Size 100 ug

Applications



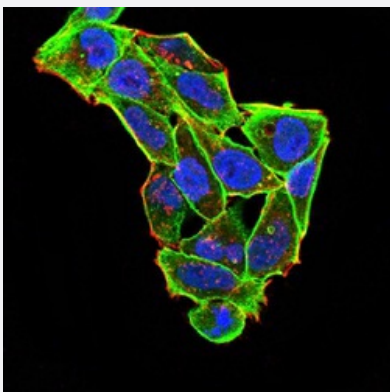
Western Blot (Transfected lysate)

Western blot analysis of Lane 1: HEK293 cell; Lane 2: RND3-hIgGFc transfected HEK293 cell with RND3 monoclonal antibody.



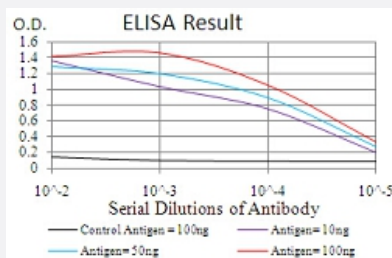
Immunohistochemistry (Formalin/PFA-fixed paraffin-embedded sections)

Immunohistochemical staining of paraffin-embedded cervical cancer tissues with RND3 monoclonal antibody.



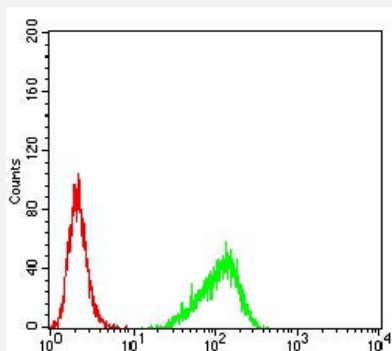
Immunocytochemistry

Immunocytochemical staining of HeLa cells with RND3 monoclonal antibody (green). DRAQ5 fluorescent DNA dye (blue). Actin filaments labeled with Alexa Fluor-555 phalloidin (red).



Enzyme-linked Immunoabsorbent Assay

ELISA analysis of RND3 monoclonal antibody, clone 5C7B6.



Flow Cytometry

Flow cytometric analysis of Hela cells with RND3 monoclonal antibody (green) and negative control (red).

Specification

Product Description	Mouse monoclonal antibody raised against recombinant human RND3.
Immunogen	Recombinant protein corresponding to amino acid 104-241 of human RND3 from <i>E. coli</i> .
Host	Mouse
Theoretical MW (kDa)	27.4
Reactivity	Human
Form	Liquid
Isotype	IgG1
Recommend Usage	ELISA (1:10000) Western Blot (1:500-1:2000) Immunohistochemistry (1:200-1:1000) Immunocytochemistry (1:200-1:1000) Flow Cytometry (1:200-1:400) The optimal working dilution should be determined by the end user.
Storage Buffer	In PBS (0.05% sodium azide).
Storage Instruction	Store at 4°C. For long term storage store at -20°C. Aliquot to avoid repeated freezing and thawing.

Note

This product contains sodium azide: a POISONOUS AND HAZARDOUS SUBSTANCE which should be handled by trained staff only.

Applications

- Western Blot (Transfected lysate)

Western blot analysis of Lane 1: HEK293 cell; Lane 2: RND3-hlgGfc transfected HEK293 cell with RND3 monoclonal antibody.

- Immunohistochemistry (Formalin/PFA-fixed paraffin-embedded sections)

Immunohistochemical staining of paraffin-embedded cervical cancer tissues with RND3 monoclonal antibody.

- Immunocytochemistry

Immunocytochemical staining of Hela cells with RND3 monoclonal antibody (green). DRAQ5 fluorescent DNA dye (blue). Actin filaments labeled with Alexa Fluor-555 phalloidin (red).

- Enzyme-linked Immunoabsorbent Assay

ELISA analysis of RND3 monoclonal antibody, clone 5C7B6.

- Flow Cytometry

Flow cytometric analysis of Hela cells with RND3 monoclonal antibody (green) and negative control (red).

Gene Info — RND3

Entrez GeneID [390](#)

Gene Name RND3

Gene Alias ARHE, Rho8, RhoE, memB

Gene Description Rho family GTPase 3

Omim ID [602924](#)

Gene Ontology [Hyperlink](#)

Gene Summary

Members of the Rho family of Ras-related GTPases, such as ARHE, regulate the organization of the actin cytoskeleton in response to extracellular growth factors. Like Ras (MIM 190020), Rho family members appear to cycle between an inactive GDP-bound form and an active GTP-bound form. Three major regulators of Rho activity have been identified: RhoGDIs, which interact with the GDP-bound Rho proteins to keep them in a resting complex (see MIM 601925); GEFs, which promote GDP/GTP exchange leading to activation of Rho proteins (see MIM 601855); and GAPs, which stimulate GTP hydrolysis and return the activated Rho protein to its inactive form (see MIM 602680) (Nobes et al., 1998 [PubMed 9531558]).[supplied by OMIM]

Other Designations

OTTHUMP00000162685|ras homolog gene family, member E|small GTP binding protein Rho8
