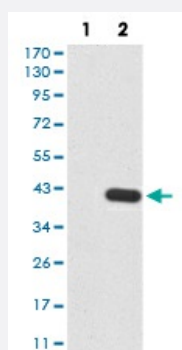


# KDM5B monoclonal antibody, clone 7H3D7

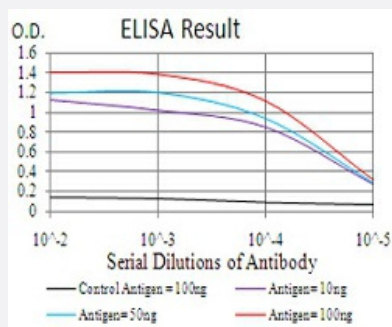
Catalog # MAB16745      Size 100 ug

## Applications



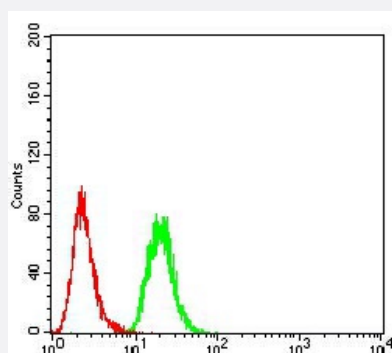
### Western Blot (Transfected lysate)

Western blot analysis of Lane 1: HEK293 cell; Lane 2: KDM5B-hlgGFc transfected HEK293 cell with KDM5B monoclonal antibody.



### Enzyme-linked Immunoabsorbent Assay

ELISA analysis of KDM5B monoclonal antibody, clone 7H3D7.



### Flow Cytometry

Flow cytometric analysis of MCF-7 cells with KDM5B monoclonal antibody (green) and negative control (red).

## Specification

### Product Description

Mouse monoclonal antibody raised against recombinant human KDM5B.

<b>Immunogen</b>	Recombinant protein corresponding to amino acid 231-319 of human KDM5B from <i>E. coli</i> .
<b>Host</b>	Mouse
<b>Theoretical MW (kDa)</b>	175.6
<b>Reactivity</b>	Human
<b>Form</b>	Liquid
<b>Isotype</b>	IgG1
<b>Recommend Usage</b>	ELISA (1:10000) Western Blot (1:500-1:2000) Immunohistochemistry Immunocytochemistry Flow Cytometry (1:200-1:400) The optimal working dilution should be determined by the end user.
<b>Storage Buffer</b>	In PBS (0.05% sodium azide).
<b>Storage Instruction</b>	Store at 4°C. For long term storage store at -20°C. Aliquot to avoid repeated freezing and thawing.
<b>Note</b>	This product contains sodium azide: a POISONOUS AND HAZARDOUS SUBSTANCE which should be handled by trained staff only.

## Applications

- Western Blot (Transfected lysate)

Western blot analysis of Lane 1: HEK293 cell; Lane 2: KDM5B-hlgGfc transfected HEK293 cell with KDM5B monoclonal antibody.

- Enzyme-linked Immunoabsorbent Assay

ELISA analysis of KDM5B monoclonal antibody, clone 7H3D7.

- Flow Cytometry

Flow cytometric analysis of MCF-7 cells with KDM5B monoclonal antibody (green) and negative control (red).

## Gene Info — KDM5B

**Entrez GeneID** [10765](#)

**Gene Name** KDM5B

Gene Alias	FLJ10538, FLJ12459, FLJ12491, FLJ16281, FLJ23670, KDM5B, PLU-1, PUT1, RBBP2H1A
Gene Description	jumonji, AT rich interactive domain 1B
Omim ID	<a href="#">605393</a>
Gene Ontology	<a href="#">Hyperlink</a>
Gene Summary	O
Other Designations	OTTHUMP00000038815 RBP2-like putative DNA/chromatin binding motif retinoblastoma-binding protein 2, homolog 1A

## Disease

- [Genetic Predisposition to Disease](#)
- [Hypertension](#)