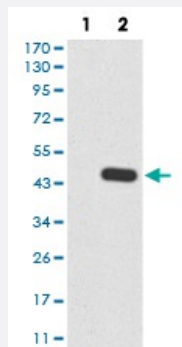


# RAB13 monoclonal antibody, clone 8E8E2

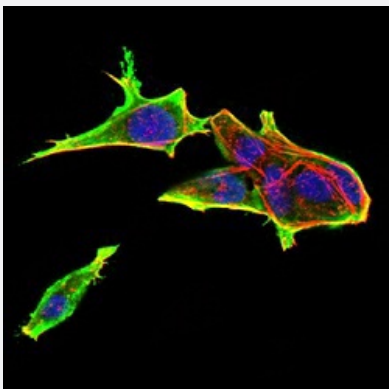
Catalog # MAB16744      Size 100 ug

## Applications



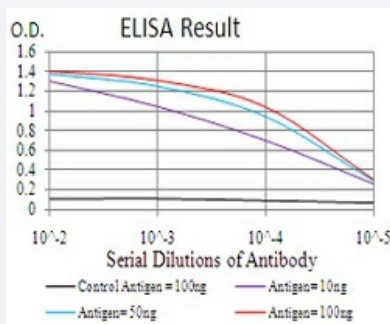
### Western Blot (Transfected lysate)

Western blot analysis of Lane 1: HEK293 cell; Lane 2: RAB13-hlgGfc transfected HEK293 cell with RAB13 monoclonal antibody.



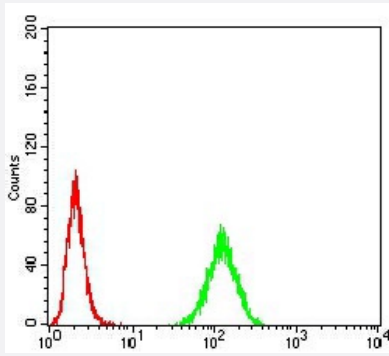
### Immunocytochemistry

Immunocytochemical staining of HeLa cells with RAB13 monoclonal antibody (green). DRAQ5 fluorescent DNA dye (blue). Actin filaments labeled with Alexa Fluor-555 phalloidin (red).



### Enzyme-linked Immunoabsorbent Assay

ELISA analysis of RAB13 monoclonal antibody, clone 8E8E2.



## Flow Cytometry

Flow cytometric analysis of Hela cells with RAB13 monoclonal antibody (green) and negative control (red).

## Specification

<b>Product Description</b>	Mouse monoclonal antibody raised against recombinant human RAB13.
<b>Immunogen</b>	Recombinant protein corresponding to amino acid 66-200 of human RAB13 from <i>E. coli</i> .
<b>Host</b>	Mouse
<b>Theoretical MW (kDa)</b>	22.8
<b>Reactivity</b>	Human
<b>Form</b>	Liquid
<b>Isotype</b>	IgG1
<b>Recommend Usage</b>	ELISA (1:10000) Western Blot (1:500-1:2000) Immunohistochemistry Immunocytochemistry (1:200-1:1000) Flow Cytometry (1:200-1:400) The optimal working dilution should be determined by the end user.
<b>Storage Buffer</b>	In PBS (0.05% sodium azide).
<b>Storage Instruction</b>	Store at 4°C. For long term storage store at -20°C. Aliquot to avoid repeated freezing and thawing.
<b>Note</b>	This product contains sodium azide: a POISONOUS AND HAZARDOUS SUBSTANCE which should be handled by trained staff only.

## Applications

- Western Blot (Transfected lysate)

Western blot analysis of Lane 1: HEK293 cell; Lane 2: RAB13-hlgGfc transfected HEK293 cell with RAB13 monoclonal antibody.

- Immunocytochemistry

Immunocytochemical staining of Hela cells with RAB13 monoclonal antibody (green). DRAQ5 fluorescent DNA dye (blue). Actin filaments labeled with Alexa Fluor-555 phalloidin (red).

- Enzyme-linked Immunoabsorbent Assay

ELISA analysis of RAB13 monoclonal antibody, clone 8E8E2.

- Flow Cytometry

Flow cytometric analysis of Hela cells with RAB13 monoclonal antibody (green) and negative control (red).

## Gene Info — RAB13

Entrez GeneID	<a href="#">5872</a>
Gene Name	RAB13
Gene Alias	GIG4
Gene Description	RAB13, member RAS oncogene family
Omim ID	<a href="#">602672</a>
Gene Ontology	<a href="#">Hyperlink</a>
Gene Summary	O
Other Designations	OTTHUMP00000034758 RAS-associated protein RAB13 growth-inhibiting gene 4 protein

## Pathway

- [Tight junction](#)