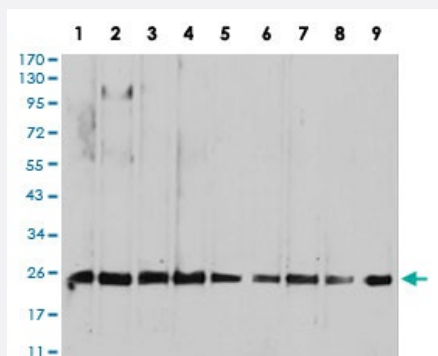


RALA monoclonal antibody, clone 4G8C7

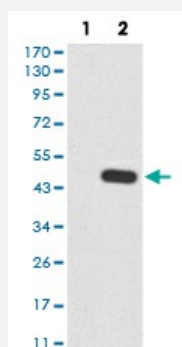
Catalog # MAB16743 Size 100 ug

Applications



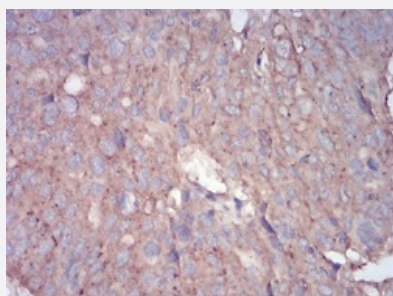
Western Blot (Cell lysate)

Western blot analysis of Lane 1: HepG2 cell; Lane 2: MCF-7 cell; Lane 3: A549 cell; Lane 4: K562 cell; Lane 5: Raji cell; Lane 6: MOLT4 cell; Lane 7: Hela cell; Lane 8: COS7 cell and Lane 9: NIH/3T3 cell with RALA monoclonal antibody.



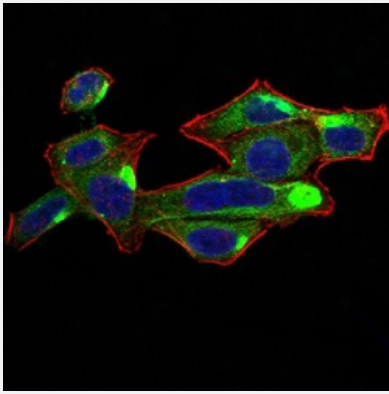
Western Blot (Transfected lysate)

Western blot analysis of Lane 1: HEK293 cell; Lane 2: RALA-hlgGfC transfected HEK293 cell with RALA monoclonal antibody.



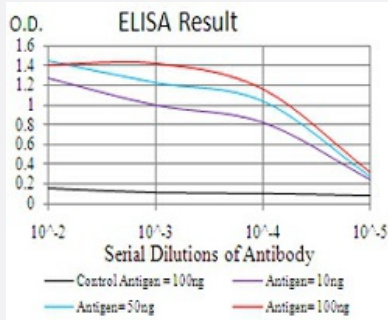
Immunohistochemistry (Formalin/PFA-fixed paraffin-embedded sections)

Immunohistochemical staining of paraffin-embedded ovarian cancer tissues with RALA monoclonal antibody.



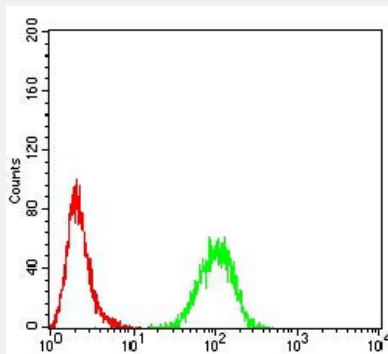
Immunocytochemistry

Immunocytochemical staining of Hela cells with RALA monoclonal antibody (green). DRAQ5 fluorescent DNA dye (blue). Actin filaments labeled with Alexa Fluor-555 phalloidin (red).



Enzyme-linked Immunoabsorbent Assay

ELISA analysis of RALA monoclonal antibody, clone 4G8C7.



Flow Cytometry

Flow cytometric analysis of MCF-7 cells with RALA monoclonal antibody (green) and negative control (red).

Specification

Product Description	Mouse monoclonal antibody raised against recombinant human RALA.
Immunogen	Recombinant protein corresponding to amino acid 71-203 of human RALA from <i>E. coli</i> .
Host	Mouse
Theoretical MW (kDa)	23.6
Reactivity	Human, Monkey, Mouse
Form	Liquid
Isotype	IgG1

Recommend Usage	ELISA (1:10000) Western Blot (1:500-1:2000) Immunohistochemistry (1:200-1:1000) Immunocytochemistry (1:200-1:1000) Flow Cytometry (1:200-1:400) The optimal working dilution should be determined by the end user.
Storage Buffer	In PBS (0.05% sodium azide).
Storage Instruction	Store at 4°C. For long term storage store at -20°C. Aliquot to avoid repeated freezing and thawing.
Note	This product contains sodium azide: a POISONOUS AND HAZARDOUS SUBSTANCE which should be handled by trained staff only.

Applications

- Western Blot (Cell lysate)

Western blot analysis of Lane 1: HepG2 cell; Lane 2: MCF-7 cell; Lane 3: A549 cell; Lane 4: K562 cell; Lane 5: Raji cell; Lane 6: MOLT4 cell; Lane 7: Hela cell; Lane 8: COS7 cell and Lane 9: NIH/3T3 cell with RALA monoclonal antibody.

- Western Blot (Transfected lysate)

Western blot analysis of Lane 1: HEK293 cell; Lane 2: RALA-hlgGfc transfected HEK293 cell with RALA monoclonal antibody.

- Immunohistochemistry (Formalin/PFA-fixed paraffin-embedded sections)

Immunohistochemical staining of paraffin-embedded ovarian cancer tissues with RALA monoclonal antibody.

- Immunocytochemistry

Immunocytochemical staining of Hela cells with RALA monoclonal antibody (green). DRAQ5 fluorescent DNA dye (blue). Actin filaments labeled with Alexa Fluor-555 phalloidin (red).

- Enzyme-linked Immunoabsorbent Assay

ELISA analysis of RALA monoclonal antibody, clone 4G8C7.

- Flow Cytometry

Flow cytometric analysis of MCF-7 cells with RALA monoclonal antibody (green) and negative control (red).

Gene Info — RALA

Entrez GeneID

[5898](#)

Gene Name

RALA

Gene Alias	MGC48949, RAL
Gene Description	v-ral simian leukemia viral oncogene homolog A (ras related)
Omim ID	179550
Gene Ontology	Hyperlink
Gene Summary	The product of this gene belongs to the small GTPase superfamily, Ras family of proteins. GTP-binding proteins mediate the transmembrane signaling initiated by the occupancy of certain cell surface receptors. This gene encodes a low molecular mass ras-like GTP-binding protein that shares about 50% similarity with other ras proteins. [provided by RefSeq]
Other Designations	RAS-like protein A Ras family small GTP binding protein RALA Ras-related protein Ral-A ras related v-ral simian leukemia viral oncogene homolog A

Pathway

- [Pancreatic cancer](#)
- [Pathways in cancer](#)

Disease

- [Tobacco Use Disorder](#)