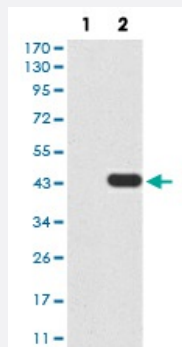


# TARDBP monoclonal antibody, clone 7F9A6

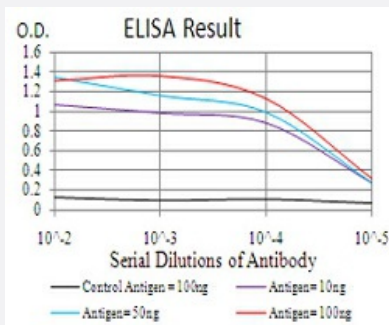
Catalog # MAB16739 Size 100 ug

## Applications



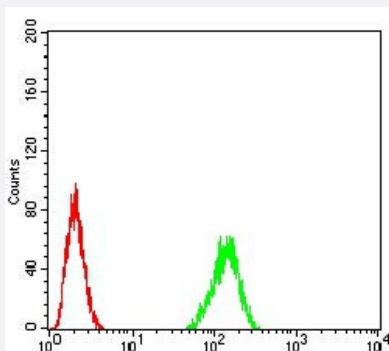
### Western Blot (Transfected lysate)

Western blot analysis of Lane 1: HEK293 cell; Lane 2: TARDBP-hlgGFc transfected HEK293 cell with TARDBP monoclonal antibody.



### Enzyme-linked Immunoabsorbent Assay

ELISA analysis of TARDBP monoclonal antibody, clone 7F9A6.



### Flow Cytometry

Flow cytometric analysis of HeLa cells with TARDBP monoclonal antibody (green) and negative control (red).

## Specification

### Product Description

Mouse monoclonal antibody raised against recombinant human TARDBP.

Immunogen	Recombinant protein corresponding to amino acid 126-260 of human TARDBP from <i>E. coli</i> .
Host	Mouse
Theoretical MW (kDa)	44.7
Reactivity	Human
Form	Liquid
Isotype	IgG1
Recommend Usage	ELISA (1:10000) Western Blot (1:500-1:2000) Immunohistochemistry Immunocytochemistry Flow Cytometry (1:200-1:400) The optimal working dilution should be determined by the end user.
Storage Buffer	In PBS (0.05% sodium azide).
Storage Instruction	Store at 4°C. For long term storage store at -20°C. Aliquot to avoid repeated freezing and thawing.
Note	This product contains sodium azide: a POISONOUS AND HAZARDOUS SUBSTANCE which should be handled by trained staff only.

## Applications

- Western Blot (Transfected lysate)

Western blot analysis of Lane 1: HEK293 cell; Lane 2: TARDBP-hlgGfc transfected HEK293 cell with TARDBP monoclonal antibody.

- Enzyme-linked Immunoabsorbent Assay

ELISA analysis of TARDBP monoclonal antibody, clone 7F9A6.

- Flow Cytometry

Flow cytometric analysis of Hela cells with TARDBP monoclonal antibody (green) and negative control (red).

## Gene Info — TARDBP

Entrez GeneID [23435](#)

Gene Name TARDBP

Gene Alias	ALS10, TDP-43
Gene Description	TAR DNA binding protein
Omim ID	<a href="#">605078</a>
Gene Ontology	<a href="#">Hyperlink</a>
Gene Summary	HIV-1, the causative agent of acquired immunodeficiency syndrome (AIDS), contains an RNA genome that produces a chromosomally integrated DNA during the replicative cycle. Activation of HIV-1 gene expression by the transactivator Tat is dependent on an RNA regulatory element (TAR) located downstream of the transcription initiation site. The protein encoded by this gene is a transcriptional repressor that binds to chromosomally integrated TAR DNA and represses HIV-1 transcription. In addition, this protein regulates alternate splicing of the CFTR gene. A similar pseudogene is present on chromosome 20. [provided by RefSeq]
Other Designations	OTTHUMP00000002171 TAR DNA-binding protein-43

## Disease

- [Alzheimer Disease](#)
- [Amyotrophic lateral sclerosis](#)
- [Chromosome Disorders](#)
- [Dementia](#)
- [Genetic Predisposition to Disease](#)
- [Neurodegenerative Diseases](#)
- [Parkinson disease](#)