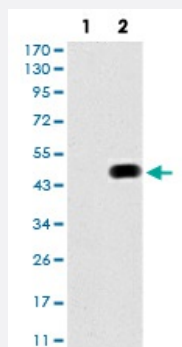


# CBX4 monoclonal antibody, clone 6C5G3

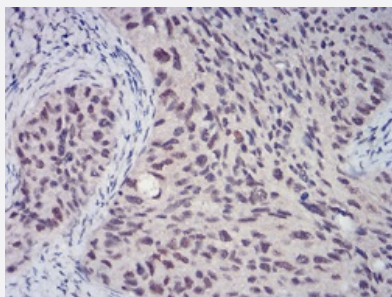
Catalog # MAB16725      Size 100 ug

## Applications



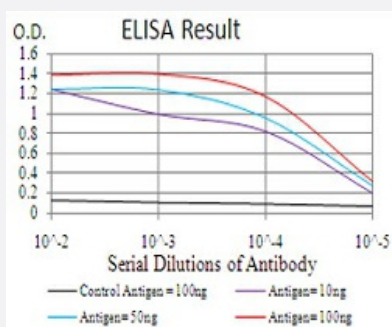
### Western Blot (Transfected lysate)

Western blot analysis of Lane 1: HEK293 cell; Lane 2: CBX4-hlgGfC transfected HEK293 cell with CBX4 monoclonal antibody.



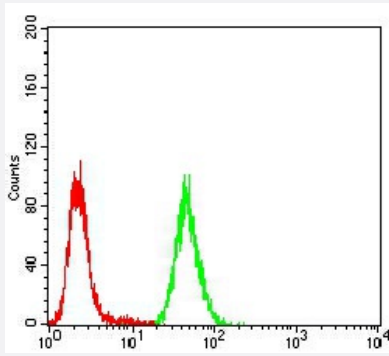
### Immunohistochemistry (Formalin/PFA-fixed paraffin-embedded sections)

Immunohistochemical staining of paraffin-embedded cervical cancer tissues with CBX4 monoclonal antibody.



### Enzyme-linked Immunoabsorbent Assay

ELISA analysis of CBX4 monoclonal antibody, clone 6C5G3.



## Flow Cytometry

Flow cytometric analysis of Hela cells with CBX4 monoclonal antibody (green) and negative control (red).

## Specification

<b>Product Description</b>	Mouse monoclonal antibody raised against recombinant human CBX4.
<b>Immunogen</b>	Recombinant protein corresponding to amino acid 397-514 of human CBX4 from <i>E. coli</i> .
<b>Host</b>	Mouse
<b>Theoretical MW (kDa)</b>	61.4
<b>Reactivity</b>	Human
<b>Form</b>	Liquid
<b>Isotype</b>	IgG1
<b>Recommend Usage</b>	ELISA (1:10000) Western Blot (1:500-1:2000) Immunohistochemistry (1:200-1:1000) Immunocytochemistry Flow Cytometry (1:200-1:400) The optimal working dilution should be determined by the end user.
<b>Storage Buffer</b>	In PBS (0.05% sodium azide).
<b>Storage Instruction</b>	Store at 4°C. For long term storage store at -20°C. Aliquot to avoid repeated freezing and thawing.
<b>Note</b>	This product contains sodium azide: a POISONOUS AND HAZARDOUS SUBSTANCE which should be handled by trained staff only.

## Applications

- Western Blot (Transfected lysate)

Western blot analysis of Lane 1: HEK293 cell; Lane 2: CBX4-hlgGfc transfected HEK293 cell with CBX4 monoclonal antibody.

- Immunohistochemistry (Formalin/PFA-fixed paraffin-embedded sections)

Immunohistochemical staining of paraffin-embedded cervical cancer tissues with CBX4 monoclonal antibody.

- Enzyme-linked Immunoabsorbent Assay

ELISA analysis of CBX4 monoclonal antibody, clone 6C5G3.

- Flow Cytometry

Flow cytometric analysis of Hela cells with CBX4 monoclonal antibody (green) and negative control (red).

## Gene Info — CBX4

Entrez GeneID	<a href="#">8535</a>
---------------	----------------------

Gene Name	CBX4
-----------	------

Gene Alias	NBP16, PC2, hPC2
------------	------------------

Gene Description	chromobox homolog 4 (Pc class homolog, Drosophila)
------------------	--

Omim ID	<a href="#">603079</a>
---------	------------------------

Gene Ontology	<a href="#">Hyperlink</a>
---------------	---------------------------

Gene Summary	O
--------------	---

Other Designations	NS5ATP1-binding protein 16 chromobox homolog 4
--------------------	--