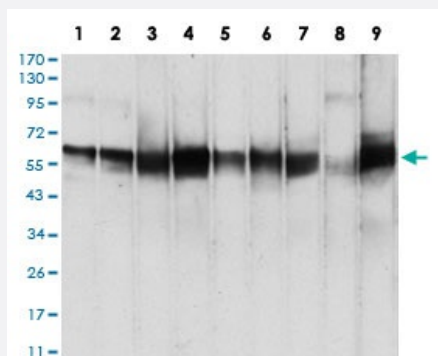


# PDPK1 monoclonal antibody, clone 7E4G11

Catalog # MAB16717

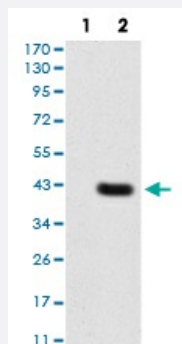
Size 100 ug

## Applications



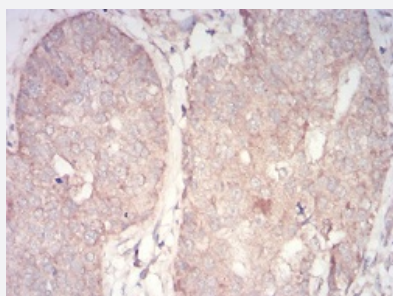
### Western Blot (Cell lysate)

Western blot analysis of Lane 1: MCF-7 cell; Lane 2: Hela cell; Lane 3: K562 cell; Lane 4: U937 cell; Lane 5: A549 cell; Lane 6: NIH/3T3 cell; Lane 7: Jurkat cell; Lane 8: PC-12 cell and Lane 9: Cos7 cell with PDPK1 monoclonal antibody.



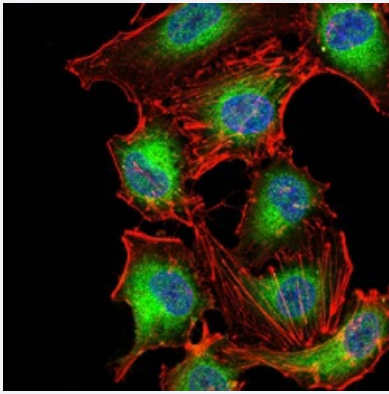
### Western Blot (Transfected lysate)

Western blot analysis of Lane 1: HEK293 cell; Lane 2: PDPK1-hlgGfc transfected HEK293 cell with PDPK1 monoclonal antibody.



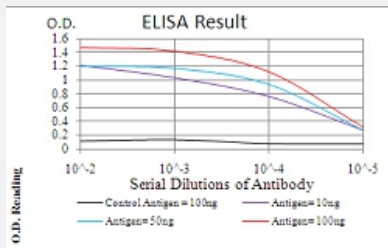
### Immunohistochemistry (Formalin/PFA-fixed paraffin-embedded sections)

Immunohistochemical staining of paraffin-embedded bladder cancer tissues with PDPK1 monoclonal antibody.



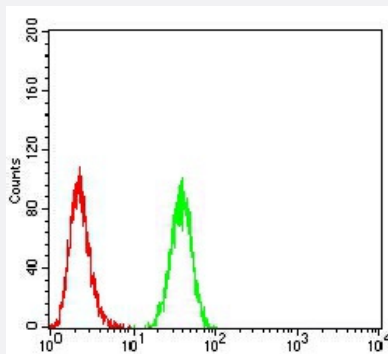
## Immunocytochemistry

Immunocytochemical staining of A549 cells with PDPK1 monoclonal antibody (green). DRAQ5 fluorescent DNA dye (blue). Actin filaments labeled with Alexa Fluor-555 phalloidin (red).



## Enzyme-linked Immunoabsorbent Assay

ELISA analysis of PDPK1 monoclonal antibody, clone 7E4G11.



## Flow Cytometry

Flow cytometric analysis of A549 cells with PDPK1 monoclonal antibody (green) and negative control (red).

## Specification

Product Description	Mouse monoclonal antibody raised against recombinant human PDPK1.
Immunogen	Recombinant protein corresponding to amino acid 457-556 of human PDPK1 from <i>E. coli</i> .
Host	Mouse
Theoretical MW (kDa)	63.2
Reactivity	Human, Monkey, Mouse, Rat
Form	Liquid
Isotype	IgG1

<b>Recommend Usage</b>	ELISA (1:10000) Western Blot (1:500-1:2000) Immunohistochemistry (1:200-1:1000) Immunocytochemistry (1:50-1:200) Flow Cytometry (1:200-1:400) The optimal working dilution should be determined by the end user.
<b>Storage Buffer</b>	In PBS (0.05% sodium azide).
<b>Storage Instruction</b>	Store at 4°C. For long term storage store at -20°C. Aliquot to avoid repeated freezing and thawing.
<b>Note</b>	This product contains sodium azide: a POISONOUS AND HAZARDOUS SUBSTANCE which should be handled by trained staff only.

## Applications

- Western Blot (Cell lysate)

Western blot analysis of Lane 1: MCF-7 cell; Lane 2: Hela cell; Lane 3: K562 cell; Lane 4: U937 cell; Lane 5: A549 cell; Lane 6: NIH/3T3 cell; Lane 7: Jurkat cell; Lane 8: PC-12 cell and Lane 9: Cos7 cell with PDPK1 monoclonal antibody.

- Western Blot (Transfected lysate)

Western blot analysis of Lane 1: HEK293 cell; Lane 2: PDPK1-hlgGfc transfected HEK293 cell with PDPK1 monoclonal antibody.

- Immunohistochemistry (Formalin/PFA-fixed paraffin-embedded sections)

Immunohistochemical staining of paraffin-embedded bladder cancer tissues with PDPK1 monoclonal antibody.

- Immunocytochemistry

Immunocytochemical staining of A549 cells with PDPK1 monoclonal antibody (green). DRAQ5 fluorescent DNA dye (blue). Actin filaments labeled with Alexa Fluor-555 phalloidin (red).

- Enzyme-linked Immunoabsorbent Assay

ELISA analysis of PDPK1 monoclonal antibody, clone 7E4G11.

- Flow Cytometry

Flow cytometric analysis of A549 cells with PDPK1 monoclonal antibody (green) and negative control (red).

## Gene Info — PDPK1

Entrez GeneID

[5170](#)

Gene Name	PDPK1
Gene Alias	MGC20087, MGC35290, PDK1, PRO0461
Gene Description	3-phosphoinositide dependent protein kinase-1
Omim ID	<a href="#">605213</a>
Gene Ontology	<a href="#">Hyperlink</a>
Other Designations	PkB kinase like gene 1 PkB-like 1 protein kinase

## Pathway

- [Endometrial cancer](#)
- [Focal adhesion](#)
- [Insulin signaling pathway](#)
- [mTOR signaling pathway](#)
- [Non-small cell lung cancer](#)
- [PPAR signaling pathway](#)
- [Prostate cancer](#)

## Disease

- [Adenocarcinoma](#)
- [Thyroid Neoplasms](#)