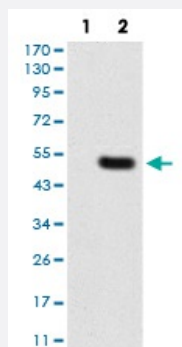


# CBX1 monoclonal antibody, clone 4D7B8

Catalog # MAB16714

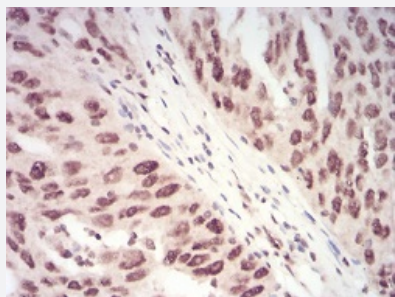
Size 100 ug

## Applications



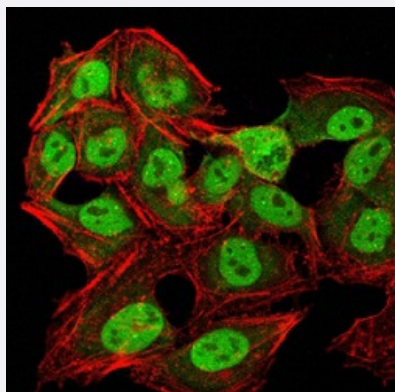
### Western Blot (Transfected lysate)

Western blot analysis of Lane 1: HEK293 cell; Lane 2: CBX1-hlgGfC transfected HEK293 cell with CBX1 monoclonal antibody.



### Immunohistochemistry (Formalin/PFA-fixed paraffin-embedded sections)

Immunohistochemical staining of paraffin-embedded ovarian cancer tissues with CBX1 monoclonal antibody.

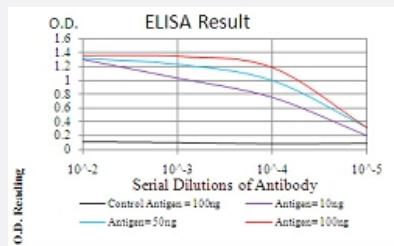


### Immunocytochemistry

Immunocytochemical staining of HeLa cells with CBX1 monoclonal antibody (green). DRAQ5 fluorescent DNA dye (blue). Actin filaments labeled with Alexa Fluor-555 phalloidin (red).

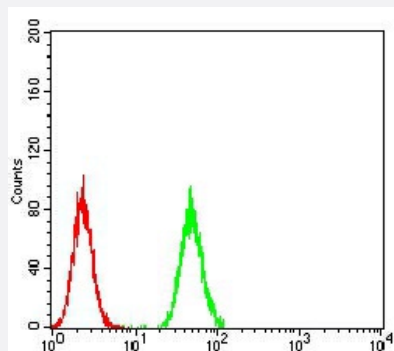
## Enzyme-linked Immunoabsorbent Assay

ELISA analysis of CBX1 monoclonal antibody, clone 4D7B8.



## Flow Cytometry

Flow cytometric analysis of Hela cells with CBX1 monoclonal antibody (green) and negative control (red).



## Specification

<b>Product Description</b>	Mouse monoclonal antibody raised against recombinant human CBX1.
<b>Immunogen</b>	Recombinant protein corresponding to amino acid 1-185 of human CBX1 from <i>E. coli</i> .
<b>Host</b>	Mouse
<b>Theoretical MW (kDa)</b>	21.4
<b>Reactivity</b>	Human
<b>Form</b>	Liquid
<b>Isotype</b>	IgG1
<b>Recommend Usage</b>	ELISA (1:10000) Western Blot (1:500-1:2000) Immunohistochemistry (1:200-1:1000) Immunocytochemistry (1:200-1:1000) Flow Cytometry (1:200-1:400) The optimal working dilution should be determined by the end user.
<b>Storage Buffer</b>	In PBS (0.05% sodium azide).
<b>Storage Instruction</b>	Store at 4°C. For long term storage store at -20°C. Aliquot to avoid repeated freezing and thawing.

**Note**

This product contains sodium azide: a POISONOUS AND HAZARDOUS SUBSTANCE which should be handled by trained staff only.

## Applications

- Western Blot (Transfected lysate)

Western blot analysis of Lane 1: HEK293 cell; Lane 2: CBX1-hlgGfc transfected HEK293 cell with CBX1 monoclonal antibody.

- Immunohistochemistry (Formalin/PFA-fixed paraffin-embedded sections)

Immunohistochemical staining of paraffin-embedded ovarian cancer tissues with CBX1 monoclonal antibody.

- Immunocytochemistry

Immunocytochemical staining of Hela cells with CBX1 monoclonal antibody (green). DRAQ5 fluorescent DNA dye (blue). Actin filaments labeled with Alexa Fluor-555 phalloidin (red).

- Enzyme-linked Immunoabsorbent Assay

ELISA analysis of CBX1 monoclonal antibody, clone 4D7B8.

- Flow Cytometry

Flow cytometric analysis of Hela cells with CBX1 monoclonal antibody (green) and negative control (red).

## Gene Info — CBX1

**Entrez GeneID** [10951](#)

**Gene Name** CBX1

**Gene Alias** CBX, HP1-BETA, HP1Hs-beta, HP1Hsbeta, M31, MOD1, p25beta

**Gene Description** chromobox homolog 1 (HP1 beta homolog Drosophila )

**Omim ID** [604511](#)

**Gene Ontology** [Hyperlink](#)

**Gene Summary**

This gene encodes a highly conserved nonhistone protein, which is a member of the heterochromatin protein family. The protein is enriched in the heterochromatin and associated with centromeres. The protein has a single N-terminal chromodomain which can bind to histone proteins via methylated lysine residues, and a C-terminal chromo shadow-domain (CSD) which is responsible for the homodimerization and interaction with a number of chromatin-associated nonhistone proteins. The protein may play an important role in the epigenetic control of chromatin structure and gene expression. Several related pseudogenes are located on chromosomes 1, 3, and X. Multiple alternatively spliced variants, encoding the same protein, have been identified. [provided by RefSeq]

**Other Designations**heterochromatin protein 1-beta|heterochromatin protein p25 beta|modifier 1 protein

---