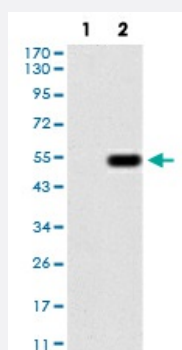


EMD monoclonal antibody, clone 8F5A8

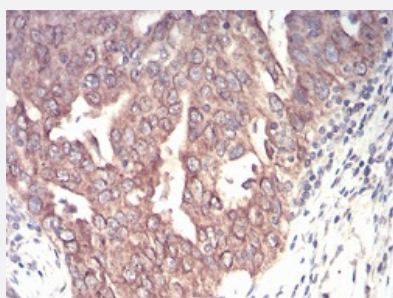
Catalog # MAB16702 Size 100 ug

Applications



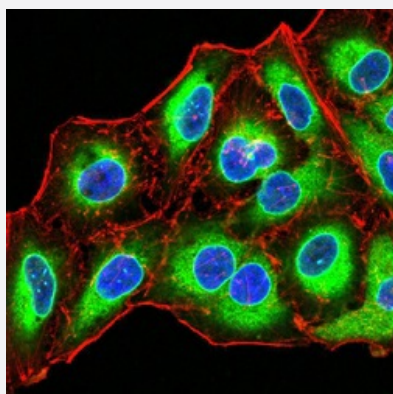
Western Blot (Transfected lysate)

Western blot analysis of Lane 1: HEK293 cell; Lane 2: EMD-hlgGFc transfected HEK293 cell with EMD monoclonal antibody.



Immunohistochemistry (Formalin/PFA-fixed paraffin-embedded sections)

Immunohistochemical staining of paraffin-embedded ovarian cancer tissues with EMD monoclonal antibody.

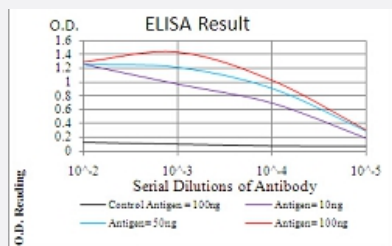


Immunocytochemistry

Immunocytochemical staining of HeLa cells with EMD monoclonal antibody (green). DRAQ5 fluorescent DNA dye (blue). Actin filaments labeled with Alexa Fluor-555 phalloidin (red).

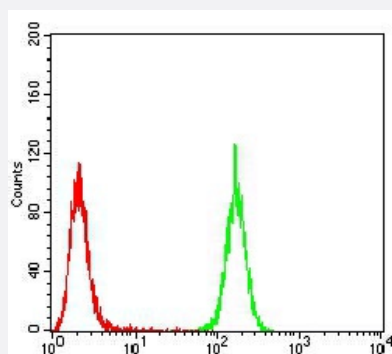
Enzyme-linked Immunoabsorbent Assay

ELISA analysis of EMD monoclonal antibody, clone 8F5A8.



Flow Cytometry

Flow cytometric analysis of A549 cells with EMD monoclonal antibody (green) and negative control (red).



Specification

Product Description	Mouse monoclonal antibody raised against recombinant human EMD.
Immunogen	Recombinant protein corresponding to amino acid 1-222 of human EMD from <i>E. coli</i> .
Host	Mouse
Theoretical MW (kDa)	29
Reactivity	Human
Form	Liquid
Isotype	IgG1
Recommend Usage	ELISA (1:10000) Western Blot (1:500-1:2000) Immunohistochemistry (1:200-1:1000) Immunocytochemistry (1:200-1:1000) Flow Cytometry (1:200-1:400) The optimal working dilution should be determined by the end user.
Storage Buffer	In PBS (0.05% sodium azide).
Storage Instruction	Store at 4°C. For long term storage store at -20°C. Aliquot to avoid repeated freezing and thawing.

Note

This product contains sodium azide: a POISONOUS AND HAZARDOUS SUBSTANCE which should be handled by trained staff only.

Applications

- Western Blot (Transfected lysate)

Western blot analysis of Lane 1: HEK293 cell; Lane 2: EMD-hlgGfc transfected HEK293 cell with EMD monoclonal antibody.

- Immunohistochemistry (Formalin/PFA-fixed paraffin-embedded sections)

Immunohistochemical staining of paraffin-embedded ovarian cancer tissues with EMD monoclonal antibody.

- Immunocytochemistry

Immunocytochemical staining of Hela cells with EMD monoclonal antibody (green). DRAQ5 fluorescent DNA dye (blue). Actin filaments labeled with Alexa Fluor-555 phalloidin (red).

- Enzyme-linked Immunoabsorbent Assay

ELISA analysis of EMD monoclonal antibody, clone 8F5A8.

- Flow Cytometry

Flow cytometric analysis of A549 cells with EMD monoclonal antibody (green) and negative control (red).

Gene Info — EMD

Entrez GeneID [2010](#)

Gene Name EMD

Gene Alias EDMD, LEMD5, STA

Gene Description emerin

Omim ID [300384](#) [310300](#)

Gene Ontology [Hyperlink](#)

Gene Summary Emerin is a serine-rich nuclear membrane protein and a member of the nuclear lamina-associated protein family. It mediates membrane anchorage to the cytoskeleton. Dreifuss-Emery muscular dystrophy is an X-linked inherited degenerative myopathy resulting from mutation in the emerin gene. [provided by RefSeq]

Other Designations LEM domain containing 5|OTTHUMP00000031938|OTTHUMP00000061687

Pathway

- [Arrhythmogenic right ventricular cardiomyopathy \(ARVC\)](#)
- [Hypertrophic cardiomyopathy \(HCM\)](#)

Disease

- [Cardiomyopathy](#)
- [Cardiovascular Diseases](#)
- [Diabetes Mellitus](#)
- [Edema](#)