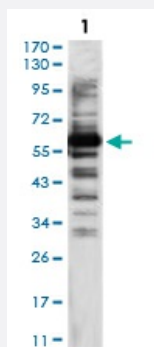


# KAT5 monoclonal antibody, clone 2A11H7

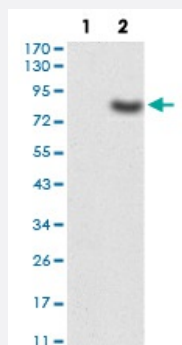
Catalog # MAB16680      Size 100 ug

## Applications



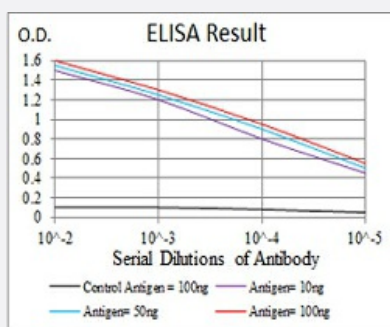
### Western Blot (Cell lysate)

Western blot analysis using TIP60 monoclonal antibody against HeLa cell lysate.



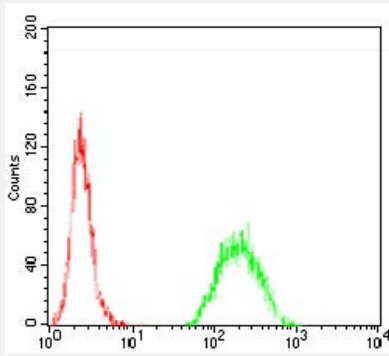
### Western Blot (Transfected lysate)

Western blot analysis of Lane 1: HEK293 cell; Lane 2: KAT5-hlgGfC transfected HEK293 cell with KAT5 monoclonal antibody.



### Enzyme-linked Immunoabsorbent Assay

ELISA analysis of KAT5 monoclonal antibody, clone 2A11H7.



## Flow Cytometry

Flow cytometric analysis of Hela cells with KAT5 monoclonal antibody (green) and negative control (red).

## Specification

<b>Product Description</b>	Mouse monoclonal antibody raised against recombinant human KAT5.
<b>Immunogen</b>	Recombinant protein corresponding to amino acid 18-208 of human KAT5 from <i>E. coli</i> .
<b>Host</b>	Mouse
<b>Theoretical MW (kDa)</b>	58.6
<b>Reactivity</b>	Human
<b>Form</b>	Liquid
<b>Isotype</b>	IgG1
<b>Recommend Usage</b>	ELISA (1:10000) Western Blot (1:500-1:2000) Immunohistochemistry Immunocytochemistry Flow Cytometry (1:200-1:400) The optimal working dilution should be determined by the end user.
<b>Storage Buffer</b>	In PBS (0.05% sodium azide).
<b>Storage Instruction</b>	Store at 4°C. For long term storage store at -20°C. Aliquot to avoid repeated freezing and thawing.
<b>Note</b>	This product contains sodium azide: a POISONOUS AND HAZARDOUS SUBSTANCE which should be handled by trained staff only.

## Applications

- Western Blot (Cell lysate)

Western blot analysis using TIP60 monoclonal antibody against Hela cell lysate.

- Western Blot (Transfected lysate)

Western blot analysis of Lane 1: HEK293 cell; Lane 2: KAT5-hlgGfc transfected HEK293 cell with KAT5 monoclonal antibody.

- Enzyme-linked Immunoabsorbent Assay

ELISA analysis of KAT5 monoclonal antibody, clone 2A11H7.

- Flow Cytometry

Flow cytometric analysis of Hela cells with KAT5 monoclonal antibody (green) and negative control (red).

## Gene Info — KAT5

Entrez GeneID [10524](#)

Gene Name KAT5

Gene Alias ESA1, HTATIP, HTATIP1, PLIP, TIP, TIP60, cPLA2

Gene Description K(lysine) acetyltransferase 5

Omim ID [601409](#)

Gene Ontology [Hyperlink](#)

**Gene Summary** The protein encoded by this gene belongs to the MYST family of histone acetyl transferases (HATs) and was originally isolated as an HIV-1 TAT-interactive protein. HATs play important roles in regulating chromatin remodeling, transcription and other nuclear processes by acetylating histone and nonhistone proteins. This protein is a histone acetylase that has a role in DNA repair and apoptosis and is thought to play an important role in signal transduction. Alternative splicing of this gene results in multiple transcript variants. [provided by RefSeq]

**Other Designations** HIV-1 Tat interactive protein, 60kDa|K-acetyltransferase 5|Tat interacting protein, 60kDa|cPLA2 interacting protein