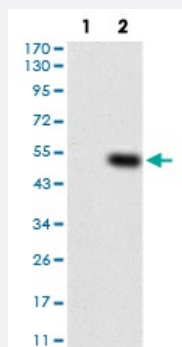


MAP3K7 monoclonal antibody, clone 3E8H4

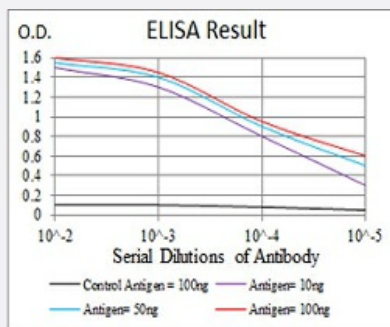
Catalog # MAB16679 Size 100 ug

Applications



Western Blot (Transfected lysate)

Western blot analysis of Lane 1: HEK293 cell; Lane 2: MAP3K7-hlgFc transfected HEK293 cell with MAP3K7 monoclonal antibody.



Enzyme-linked Immunoabsorbent Assay

ELISA analysis of MAP3K7 monoclonal antibody, clone 3E8H4.

Specification

Product Description	Mouse monoclonal antibody raised against recombinant human MAP3K7.
Immunogen	Recombinant protein corresponding to amino acid 471-579 of human MAP3K7 from <i>E. coli</i> .
Host	Mouse
Theoretical MW (kDa)	67.2
Reactivity	Human
Form	Liquid
Isotype	IgG2a

Recommend Usage	ELISA (1:10000) Western Blot (1:500-1:2000) Immunohistochemistry Immunocytochemistry Flow Cytometry The optimal working dilution should be determined by the end user.
Storage Buffer	In PBS (0.05% sodium azide, 0.5% protein stabilizer).
Storage Instruction	Store at 4°C. For long term storage store at -20°C. Aliquot to avoid repeated freezing and thawing.
Note	This product contains sodium azide: a POISONOUS AND HAZARDOUS SUBSTANCE which should be handled by trained staff only.

Applications

- Western Blot (Transfected lysate)

Western blot analysis of Lane 1: HEK293 cell; Lane 2: MAP3K7-hlgGfc transfected HEK293 cell with MAP3K7 monoclonal antibody.

- Enzyme-linked Immunoabsorbent Assay

ELISA analysis of MAP3K7 monoclonal antibody, clone 3E8H4.

Gene Info — MAP3K7

Entrez GeneID	6885
Gene Name	MAP3K7
Gene Alias	TAK1, TGF1a
Gene Description	mitogen-activated protein kinase kinase kinase 7
Omim ID	602614
Gene Ontology	Hyperlink

Gene Summary

The protein encoded by this gene is a member of the serine/threonine protein kinase family. This kinase mediates the signaling transduction induced by TGF beta and morphogenetic protein (BMP), and controls a variety of cell functions including transcription regulation and apoptosis. In response to IL-1, this protein forms a kinase complex including TRAF6, MAP3K7P1/TAB1 and MAP3K7P2/TAB2; this complex is required for the activation of nuclear factor kappa B. This kinase can also activate MAPK8/JNK, MAP2K4/MKK4, and thus plays a role in the cell response to environmental stresses. Four alternatively spliced transcript variants encoding distinct isoforms have been reported. [provided by RefSeq]

Other Designations

OTTHUMP00000016870|OTTHUMP00000016871|OTTHUMP00000016872|OTTHUMP00000016873|TGF-beta activated kinase 1|transforming growth factor-beta-activated kinase 1

Pathway

- [Adherens junction](#)
- [MAPK signaling pathway](#)
- [T cell receptor signaling pathway](#)
- [Toll-like receptor signaling pathway](#)
- [Wnt signaling pathway](#)

Disease

- [Arthritis](#)
- [Crohn Disease](#)
- [Genetic Predisposition to Disease](#)
- [Inflammatory Bowel Diseases](#)
- [Narcolepsy](#)
- [Tobacco Use Disorder](#)