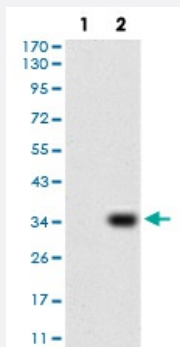


P2RY13 monoclonal antibody, clone 6G12E10

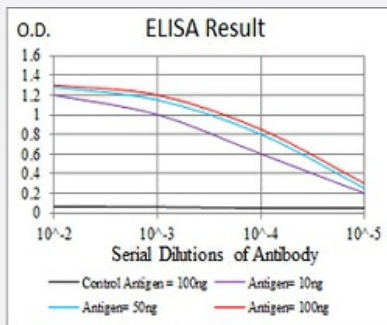
Catalog # MAB16674 Size 100 ug

Applications



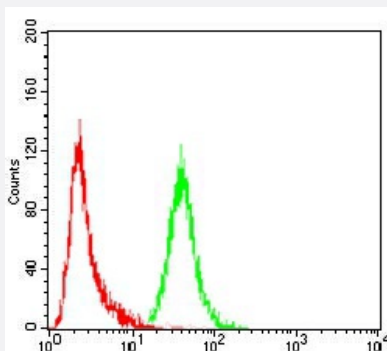
Western Blot (Transfected lysate)

Western blot analysis of Lane 1: HEK293 cell; Lane 2: P2RY13-hlgGfC transfected HEK293 cell with P2RY13 monoclonal antibody.



Enzyme-linked Immunoabsorbent Assay

ELISA analysis of P2RY13 monoclonal antibody, clone 6G12E10.



Flow Cytometry

Flow cytometric analysis of Hela cells with P2RY13 monoclonal antibody (green) and negative control (red).

Specification

Product Description

Mouse monoclonal antibody raised against recombinant human P2RY13.

Immunogen	Recombinant protein corresponding to amino acid 1-49 of human P2RY13 from <i>E. coli</i> .
Host	Mouse
Theoretical MW (kDa)	40.8
Reactivity	Human
Form	Liquid
Isotype	IgG1
Recommend Usage	ELISA (1:10000) Western Blot (1:500-1:2000) Immunohistochemistry Immunocytochemistry Flow Cytometry (1:200-1:400) The optimal working dilution should be determined by the end user.
Storage Buffer	In PBS (0.05% sodium azide).
Storage Instruction	Store at 4°C. For long term storage store at -20°C. Aliquot to avoid repeated freezing and thawing.
Note	This product contains sodium azide: a POISONOUS AND HAZARDOUS SUBSTANCE which should be handled by trained staff only.

Applications

- Western Blot (Transfected lysate)

Western blot analysis of Lane 1: HEK293 cell; Lane 2: P2RY13-hlgGfc transfected HEK293 cell with P2RY13 monoclonal antibody.

- Enzyme-linked Immunoabsorbent Assay

ELISA analysis of P2RY13 monoclonal antibody, clone 6G12E10.

- Flow Cytometry

Flow cytometric analysis of Hela cells with P2RY13 monoclonal antibody (green) and negative control (red).

Gene Info — P2RY13

Entrez GeneID

[53829](#)

Gene Name

P2RY13

Gene Alias	FKSG77, GPCR1, GPR86, GPR94, P2Y13, SP174
Gene Description	purinergic receptor P2Y, G-protein coupled, 13
Omim ID	606380
Gene Ontology	Hyperlink
Gene Summary	The product of this gene belongs to the family of G-protein coupled receptors. This family has several receptor subtypes with different pharmacological selectivity, which overlaps in some cases, for various adenosine and uridine nucleotides. This receptor is activated by ADP. [provided by RefSeq]
Other Designations	G protein-coupled receptor 86 G-protein coupled receptor 94 P2Y purinoceptor 13

Pathway

- [Neuroactive ligand-receptor interaction](#)

Disease

- [Cardiovascular Diseases](#)
- [Diabetes Mellitus](#)
- [Edema](#)