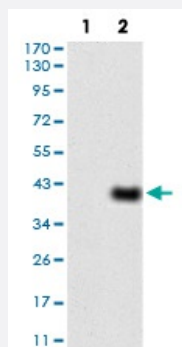


WTAP monoclonal antibody, clone 6B6B8

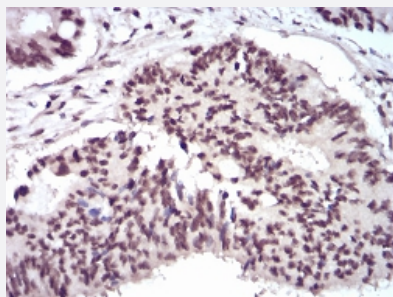
Catalog # MAB16672 Size 100 ug

Applications



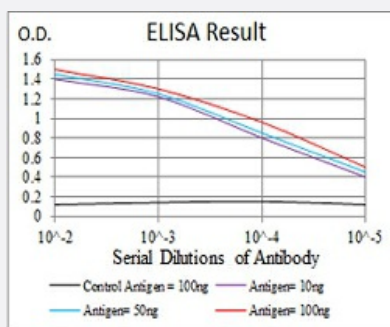
Western Blot (Transfected lysate)

Western blot analysis of Lane 1: HEK293 cell; Lane 2: WTAP-hlgGfC transfected HEK293 cell with WTAP monoclonal antibody.



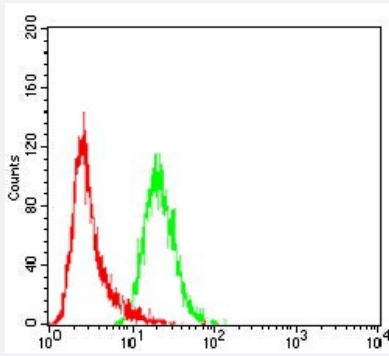
Immunohistochemistry (Formalin/PFA-fixed paraffin-embedded sections)

Immunohistochemical staining of paraffin-embedded rectal cancer tissues with WTAP monoclonal antibody.



Enzyme-linked Immunoabsorbent Assay

ELISA analysis of WTAP monoclonal antibody, clone 6B6B8.



Flow Cytometry

Flow cytometric analysis of Hela cells with WTAP monoclonal antibody (green) and negative control (red).

Specification

Product Description	Mouse monoclonal antibody raised against recombinant human WTAP.
Immunogen	Recombinant protein corresponding to amino acid 91-201 of human WTAP from <i>E. coli</i> .
Host	Mouse
Theoretical MW (kDa)	44.2
Reactivity	Human
Form	Liquid
Isotype	IgG1
Recommend Usage	ELISA (1:10000) Western Blot (1:500-1:2000) Immunohistochemistry (1:200-1:1000) Immunocytochemistry Flow Cytometry (1:200-1:400) The optimal working dilution should be determined by the end user.
Storage Buffer	In PBS (0.05% sodium azide).
Storage Instruction	Store at 4°C. For long term storage store at -20°C. Aliquot to avoid repeated freezing and thawing.
Note	This product contains sodium azide: a POISONOUS AND HAZARDOUS SUBSTANCE which should be handled by trained staff only.

Applications

- Western Blot (Transfected lysate)

Western blot analysis of Lane 1: HEK293 cell; Lane 2: WTAP-hlgGfc transfected HEK293 cell with WTAP monoclonal antibody.

- Immunohistochemistry (Formalin/PFA-fixed paraffin-embedded sections)

Immunohistochemical staining of paraffin-embedded rectal cancer tissues with WTAP monoclonal antibody.

- Enzyme-linked Immunoabsorbent Assay

ELISA analysis of WTAP monoclonal antibody, clone 6B6B8.

- Flow Cytometry

Flow cytometric analysis of Hela cells with WTAP monoclonal antibody (green) and negative control (red).

Gene Info — WTAP

Entrez GeneID [9589](#)

Gene Name WTAP

Gene Alias DKFZp686F20131, KIAA0105, MGC3925

Gene Description Wilms tumor 1 associated protein

Omim ID [605442](#)

Gene Ontology [Hyperlink](#)

Gene Summary The Wilms tumor suppressor gene WT1 appears to play a role in both transcriptional and posttranscriptional regulation of certain cellular genes. This gene encodes a WT1-associating protein, which is a ubiquitously expressed nuclear protein. Like WT1 protein, this protein is localized throughout the nucleoplasm as well as in speckles and partially colocalizes with splicing factors. Alternative splicing of this gene results in three transcript variants, two of which encode the same isoform. [provided by RefSeq]

Other Designations OTTHUMP00000017522|OTTHUMP00000017523|PNAS-132|WT1-associated protein|Wilms' tumor 1-associating protein|putative pre-mRNA splicing regulator female-lethal(2D)