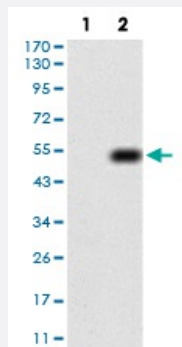


EZH2 monoclonal antibody, clone 6G4F4

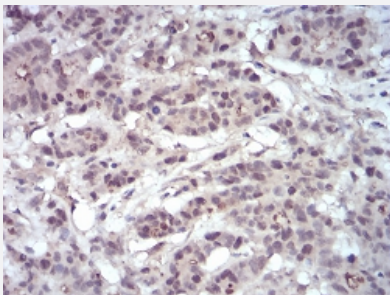
Catalog # MAB16666 Size 100 ug

Applications



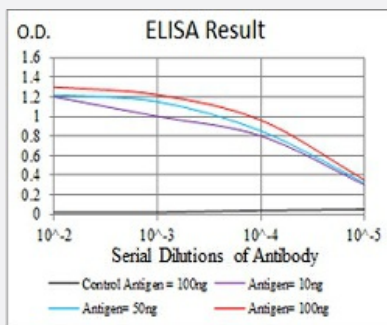
Western Blot (Transfected lysate)

Western blot analysis of Lane 1: HEK293 cell; Lane 2: EZH2-hlgGFc transfected HEK293 cell with EZH2 monoclonal antibody.



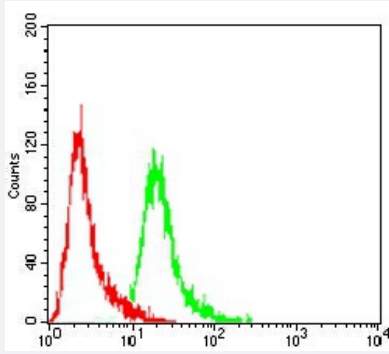
Immunohistochemistry (Formalin/PFA-fixed paraffin-embedded sections)

Immunohistochemical staining of paraffin-embedded colon cancer tissues with EZH2 monoclonal antibody.



Enzyme-linked Immunoabsorbent Assay

ELISA analysis of EZH2 monoclonal antibody, clone 6G4F4.



Flow Cytometry

Flow cytometric analysis of Hela cells with EZH2 monoclonal antibody (green) and negative control (red).

Specification

Product Description	Mouse monoclonal antibody raised against recombinant human EZH2.
Immunogen	Recombinant protein corresponding to amino acid 1-194 of human EZH2 from <i>E. coli</i> .
Host	Mouse
Theoretical MW (kDa)	85.4
Reactivity	Human
Form	Liquid
Isotype	IgG1
Recommend Usage	ELISA (1:10000) Western Blot (1:500-1:2000) Immunohistochemistry (1:200-1:1000) Immunocytochemistry Flow Cytometry (1:200-1:400) The optimal working dilution should be determined by the end user.
Storage Buffer	In PBS (0.05% sodium azide).
Storage Instruction	Store at 4°C. For long term storage store at -20°C. Aliquot to avoid repeated freezing and thawing.
Note	This product contains sodium azide: a POISONOUS AND HAZARDOUS SUBSTANCE which should be handled by trained staff only.

Applications

- Western Blot (Transfected lysate)

Western blot analysis of Lane 1: HEK293 cell; Lane 2: EZH2-hlgGfc transfected HEK293 cell with EZH2 monoclonal antibody.

- Immunohistochemistry (Formalin/PFA-fixed paraffin-embedded sections)

Immunohistochemical staining of paraffin-embedded colon cancer tissues with EZH2 monoclonal antibody.

- Enzyme-linked Immunoabsorbent Assay

ELISA analysis of EZH2 monoclonal antibody, clone 6G4F4.

- Flow Cytometry

Flow cytometric analysis of Hela cells with EZH2 monoclonal antibody (green) and negative control (red).

Gene Info — EZH2

Entrez GeneID [2146](#)

Gene Name EZH2

Gene Alias ENX-1, EZH1, KMT6, MGC9169

Gene Description enhancer of zeste homolog 2 (Drosophila)

Omim ID [601573](#)

Gene Ontology [Hyperlink](#)

Gene Summary This gene encodes a member of the Polycomb-group (PcG) family. PcG family members form multimeric protein complexes, which are involved in maintaining the transcriptional repressive state of genes over successive cell generations. This protein associates with the embryonic ectoderm development protein, the VAV1 oncoprotein, and the X-linked nuclear protein. This protein may play a role in the hematopoietic and central nervous systems. Two transcript variants encoding distinct isoforms have been identified for this gene. [provided by RefSeq]

Other Designations enhancer of zeste 2

Disease

- [Adenocarcinoma](#)
- [Carcinoma](#)
- [Genetic Predisposition to Disease](#)

- [Leukemia](#)
- [Lung Neoplasms](#)
- [Lymphoma](#)
- [Prostate cancer](#)
- [Prostatic Neoplasms](#)
- [Small Cell Lung Carcinoma](#)
- [Tobacco Use Disorder](#)