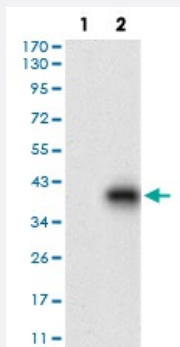


CDH17 monoclonal antibody, clone 7D10E1

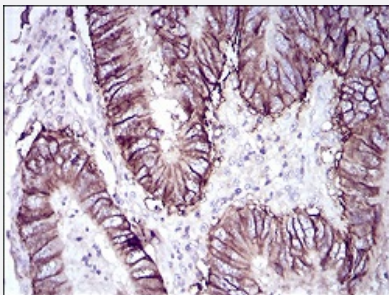
Catalog # MAB16655 Size 100 ug

Applications



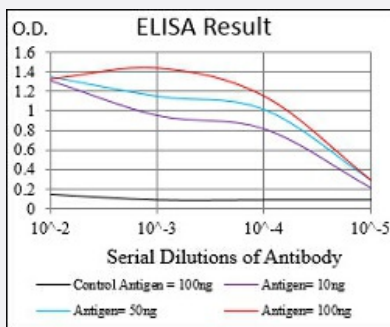
Western Blot (Transfected lysate)

Western blot analysis of Lane 1: HEK293 cell; Lane 2: CDH17-hlgGfc transfected HEK293 cell with CDH17 monoclonal antibody.



Immunohistochemistry (Formalin/PFA-fixed paraffin-embedded sections)

Immunohistochemical staining of paraffin-embedded rectal cancer tissues with CDH17 monoclonal antibody.



Enzyme-linked Immunoabsorbent Assay

ELISA analysis of CDH17 monoclonal antibody, clone 7D10E1.

Specification

Product Description

Mouse monoclonal antibody raised against recombinant human CDH17.

Immunogen

Recombinant protein corresponding to amino acid extra 600-707 of human CDH17 from *E. coli*.

Host	Mouse
Theoretical MW (kDa)	92.2
Reactivity	Human
Form	Liquid
Isotype	IgG1
Recommend Usage	ELISA (1:10000) Western Blot (1:500-1:2000) Immunohistochemistry (1:200-1:1000) The optimal working dilution should be determined by the end user.
Storage Buffer	In PBS (0.05% sodium azide).
Storage Instruction	Store at 4°C. For long term storage store at -20°C. Aliquot to avoid repeated freezing and thawing.
Note	This product contains sodium azide: a POISONOUS AND HAZARDOUS SUBSTANCE which should be handled by trained staff only.

Applications

- Western Blot (Transfected lysate)

Western blot analysis of Lane 1: HEK293 cell; Lane 2: CDH17-hlgGFc transfected HEK293 cell with CDH17 monoclonal antibody.

- Immunohistochemistry (Formalin/PFA-fixed paraffin-embedded sections)

Immunohistochemical staining of paraffin-embedded rectal cancer tissues with CDH17 monoclonal antibody.

- Enzyme-linked Immunoabsorbent Assay

ELISA analysis of CDH17 monoclonal antibody, clone 7D10E1.

Gene Info — CDH17

Entrez GeneID	1015
Gene Name	CDH17
Gene Alias	CDH16, FLJ26931, HPT-1, HPT1, MGC138218, MGC142024
Gene Description	cadherin 17, LI cadherin (liver-intestine)

Omim ID [603017](#)

Gene Ontology [Hyperlink](#)

Gene Summary

This gene is a member of the cadherin superfamily, genes encoding calcium-dependent, membrane-associated glycoproteins. The encoded protein is cadherin-like, consisting of an extracellular region, containing 7 cadherin domains, and a transmembrane region but lacking the conserved cytoplasmic domain. The protein is a component of the gastrointestinal tract and pancreatic ducts, acting as an intestinal proton-dependent peptide transporter in the first step in oral absorption of many medically important peptide-based drugs. The protein may also play a role in the morphological organization of liver and intestine. Alternative splicing results in multiple transcript variants. [provided by RefSeq]

Other Designations

HPT-1 cadherin|LI cadherin|cadherin 17|cadherin-16|human intestinal peptide-associated transporter HPT-1|human peptide transporter 1|liver-intestine cadherin

Disease

- [Depressive Disorder](#)