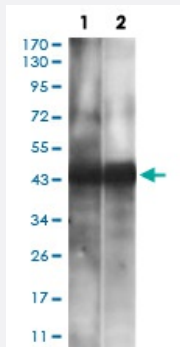


# CD38 monoclonal antibody, clone 5C5C3

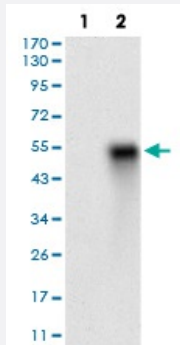
Catalog # MAB16653      Size 100 ug

## Applications



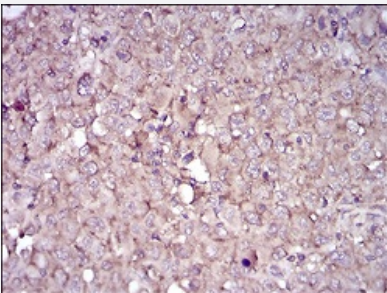
### Western Blot (Cell lysate)

Western blot analysis of Lane 1: HEK293 cell and Lane 2: Lncap cell with CD38 monoclonal antibody.



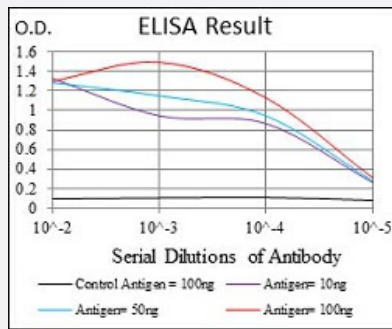
### Western Blot (Transfected lysate)

Western blot analysis of Lane 1: HEK293 cell; Lane 2: CD38-hlgGfC transfected HEK293 cell with CD38 monoclonal antibody.



### Immunohistochemistry (Formalin/PFA-fixed paraffin-embedded sections)

Immunohistochemical staining of paraffin-embedded endometrial cancer tissues with CD38 monoclonal antibody.



## Enzyme-linked Immunoabsorbent Assay

ELISA analysis of CD38 monoclonal antibody, clone 5C5C3.

## Specification

<b>Product Description</b>	Mouse monoclonal antibody raised against recombinant human CD38.
<b>Immunogen</b>	Recombinant protein corresponding to amino acid 43-300 of human CD38 from <i>E. coli</i> .
<b>Host</b>	Mouse
<b>Theoretical MW (kDa)</b>	34.3
<b>Reactivity</b>	Human
<b>Form</b>	Liquid
<b>Isotype</b>	IgG1
<b>Recommend Usage</b>	ELISA (1:10000) Western Blot (1:500-1:2000) Immunohistochemistry (1:200-1:1000) The optimal working dilution should be determined by the end user.
<b>Storage Buffer</b>	In PBS (0.05% sodium azide).
<b>Storage Instruction</b>	Store at 4°C. For long term storage store at -20°C. Aliquot to avoid repeated freezing and thawing.
<b>Note</b>	This product contains sodium azide: a POISONOUS AND HAZARDOUS SUBSTANCE which should be handled by trained staff only.

## Applications

- Western Blot (Cell lysate)

Western blot analysis of Lane 1: HEK293 cell and Lane 2: Lncap cell with CD38 monoclonal antibody.

- Western Blot (Transfected lysate)

Western blot analysis of Lane 1: HEK293 cell; Lane 2: CD38-hlgGFc transfected HEK293 cell with CD38 monoclonal antibody.

- Immunohistochemistry (Formalin/PFA-fixed paraffin-embedded sections)

Immunohistochemical staining of paraffin-embedded endometrial cancer tissues with CD38 monoclonal antibody.

- Enzyme-linked Immunoabsorbent Assay

ELISA analysis of CD38 monoclonal antibody, clone 5C5C3.

## Gene Info — CD38

Entrez GeneID	<a href="#">952</a>
Gene Name	CD38
Gene Alias	T10
Gene Description	CD38 molecule
Omim ID	<a href="#">107270</a>
Gene Ontology	<a href="#">Hyperlink</a>
Gene Summary	CD38 is a novel multifunctional ectoenzyme widely expressed in cells and tissues especially in leukocytes. CD38 also functions in cell adhesion, signal transduction and calcium signaling. [provided by RefSeq]
Other Designations	ADP-ribosyl cyclase/cyclic ADP-ribose hydrolase CD38 antigen CD38 antigen (p45) cyclic ADP-ribose hydrolase

## Pathway

- [Calcium signaling pathway](#)
- [Hematopoietic cell lineage](#)
- [Metabolic pathways](#)
- [Nicotinate and nicotinamide metabolism](#)

## Disease

- [Cell Transformation](#)
- [Child Development Disorders](#)
- [Diabetes Mellitus](#)
- [Genetic Predisposition to Disease](#)
- [Leukemia](#)
- [Lupus Erythematosus](#)
- [Lymphoma](#)
- [Osteoporosis](#)