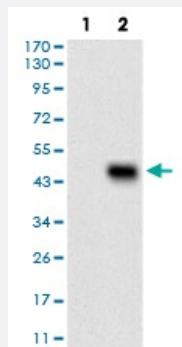


CD6 monoclonal antibody, clone 6B11G6

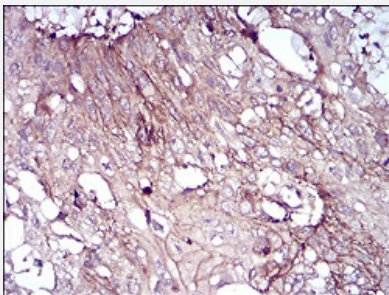
Catalog # MAB16647 Size 100 ug

Applications



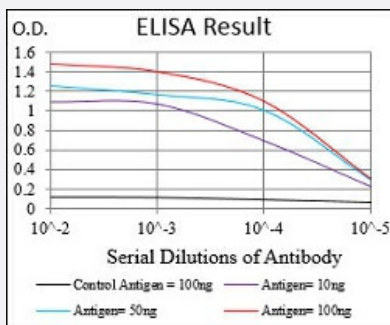
Western Blot (Transfected lysate)

Western blot analysis of Lane 1: HEK293 cell; Lane 2: CD6-hlgGFc transfected HEK293 cell with CD6 monoclonal antibody.



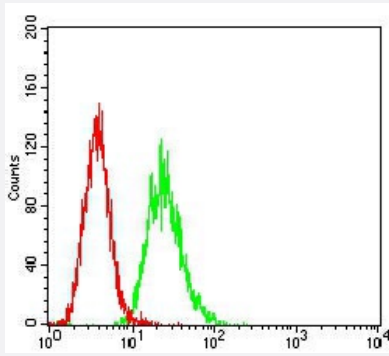
Immunohistochemistry (Formalin/PFA-fixed paraffin-embedded sections)

Immunohistochemical staining of paraffin-embedded esophageal cancer tissues with CD6 monoclonal antibody.



Enzyme-linked Immunoabsorbent Assay

ELISA analysis of CD6 monoclonal antibody, clone 6B11G6 .



Flow Cytometry

Flow cytometric analysis of Hela cells with CD6 monoclonal antibody (green) and negative control (red).

Specification

Product Description	Mouse monoclonal antibody raised against recombinant human CD6.
Immunogen	Recombinant protein corresponding to amino acid 18-199 of human CD6 from <i>E. coli</i> .
Host	Mouse
Theoretical MW (kDa)	71.8
Reactivity	Human
Form	Liquid
Isotype	IgG2b
Recommend Usage	ELISA (1:10000) Western Blot (1:500-1:2000) Immunohistochemistry (1:200-1:1000) Flow Cytometry (1:200-1:400) The optimal working dilution should be determined by the end user.
Storage Buffer	In PBS (0.05% sodium azide).
Storage Instruction	Store at 4°C. For long term storage store at -20°C. Aliquot to avoid repeated freezing and thawing.
Note	This product contains sodium azide: a POISONOUS AND HAZARDOUS SUBSTANCE which should be handled by trained staff only.

Applications

- Western Blot (Transfected lysate)

Western blot analysis of Lane 1: HEK293 cell; Lane 2: CD6-hlgGfC transfected HEK293 cell with CD6 monoclonal antibody.

- Immunohistochemistry (Formalin/PFA-fixed paraffin-embedded sections)

Immunohistochemical staining of paraffin-embedded esophageal cancer tissues with CD6 monoclonal antibody.

- Enzyme-linked Immunoabsorbent Assay

ELISA analysis of CD6 monoclonal antibody, clone 6B11G6 .

- Flow Cytometry

Flow cytometric analysis of Hela cells with CD6 monoclonal antibody (green) and negative control (red).

Gene Info — CD6

Entrez GeneID	923
Gene Name	CD6
Gene Alias	FLJ44171, TP120
Gene Description	CD6 molecule
Omim ID	186720
Gene Ontology	Hyperlink
Gene Summary	CD6 is a monomeric 105- or 130-kD membrane glycoprotein that is involved in T-cell activation. The size difference between the 2 CD6 forms is due to differences in phosphorylation (Robinson et al., 1995 [PubMed 7589069]).[supplied by OMIM]
Other Designations	CD6 antigen

Pathway

- [Cell adhesion molecules \(CAMs\)](#)

Disease

- [Genetic Predisposition to Disease](#)
- [Multiple Sclerosis](#)