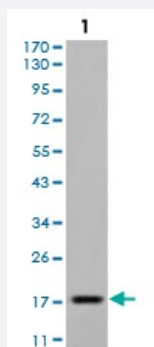


EIF5A monoclonal antibody, clone 4E10G8

Catalog # MAB16634

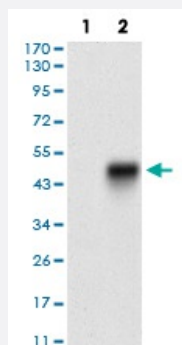
Size 100 ug

Applications



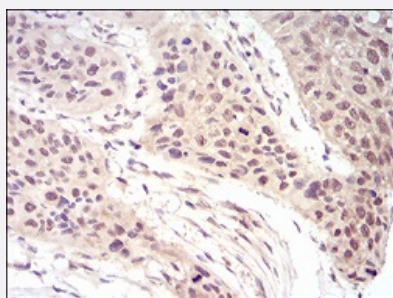
Western Blot (Cell lysate)

Western blot analysis using EIF5A monoclonal antibody against Raji cell lysate.



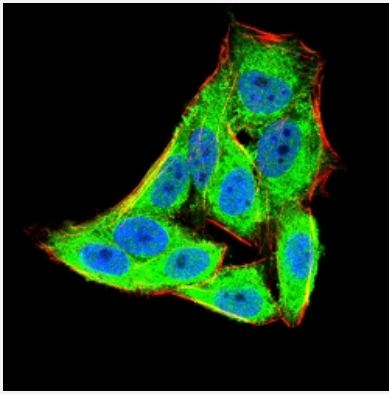
Western Blot (Transfected lysate)

Western blot analysis of Lane 1: HEK293 cell; Lane 2: EIF5A-hlgGFc transfected HEK293 cell with EIF5A monoclonal antibody.



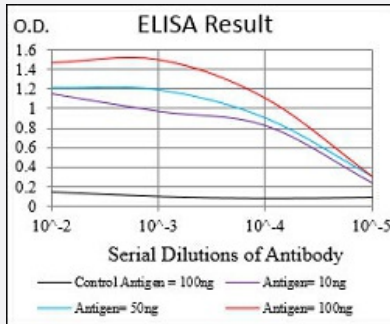
Immunohistochemistry (Formalin/PFA-fixed paraffin-embedded sections)

Immunohistochemical staining of paraffin-embedded esophageal cancer tissues with EIF5A monoclonal antibody.



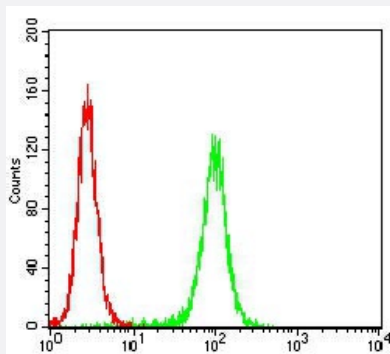
Immunocytochemistry

Immunocytochemical staining of HeLa cells with EIF5A monoclonal antibody (green). DRAQ5 fluorescent DNA dye (blue). Actin filaments labeled with Alexa Fluor-555 phalloidin (red).



Enzyme-linked Immunoabsorbent Assay

ELISA analysis of EIF5A monoclonal antibody, clone 4E10G8.



Flow Cytometry

Flow cytometric analysis of HeLa cells with EIF5A monoclonal antibody (green) and negative control (red).

Specification

Product Description	Mouse monoclonal antibody raised against recombinant human EIF5A.
Immunogen	Recombinant protein corresponding to amino acid 1-154 of human EIF5A from <i>E. coli</i> .
Host	Mouse
Theoretical MW (kDa)	16.8
Reactivity	Human
Form	Liquid
Isotype	IgG1

Recommend Usage	ELISA (1:10000) Western Blot (1:500-1:2000) Immunohistochemistry (1:200-1:1000) Immunocytochemistry (1:200-1:1000) Flow Cytometry (1:200-1:400) The optimal working dilution should be determined by the end user.
Storage Buffer	In PBS (0.05% sodium azide).
Storage Instruction	Store at 4°C. For long term storage store at -20°C. Aliquot to avoid repeated freezing and thawing.
Note	This product contains sodium azide: a POISONOUS AND HAZARDOUS SUBSTANCE which should be handled by trained staff only.

Applications

- Western Blot (Cell lysate)

Western blot analysis using EIF5A monoclonal antibody against Raji cell lysate.

- Western Blot (Transfected lysate)

Western blot analysis of Lane 1: HEK293 cell; Lane 2: EIF5A-hlgFc transfected HEK293 cell with EIF5A monoclonal antibody.

- Immunohistochemistry (Formalin/PFA-fixed paraffin-embedded sections)

Immunohistochemical staining of paraffin-embedded esophageal cancer tissues with EIF5A monoclonal antibody.

- Immunocytochemistry

Immunocytochemical staining of Hela cells with EIF5A monoclonal antibody (green). DRAQ5 fluorescent DNA dye (blue). Actin filaments labeled with Alexa Fluor-555 phalloidin (red).

- Enzyme-linked Immunoabsorbent Assay

ELISA analysis of EIF5A monoclonal antibody, clone 4E10G8.

- Flow Cytometry

Flow cytometric analysis of Hela cells with EIF5A monoclonal antibody (green) and negative control (red).

Gene Info — EIF5A

Entrez GeneID [1984](#)

Gene Name EIF5A

Gene Alias	EIF-5A, EIF5A1, MGC104255, MGC99547, eIF5AI
Gene Description	eukaryotic translation initiation factor 5A
Omim ID	600187
Gene Ontology	Hyperlink
Other Designations	OTTHUMP00000128384 uORF A