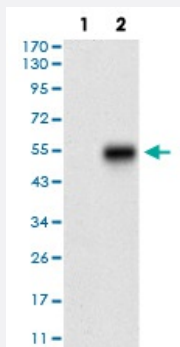


CTNNBL1 monoclonal antibody, clone 2H10F11

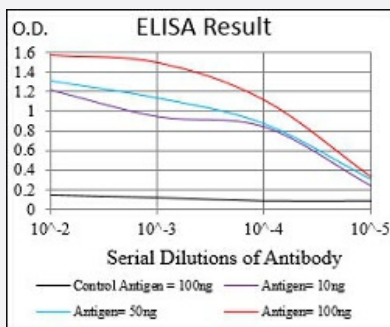
Catalog # MAB16632 Size 100 ug

Applications



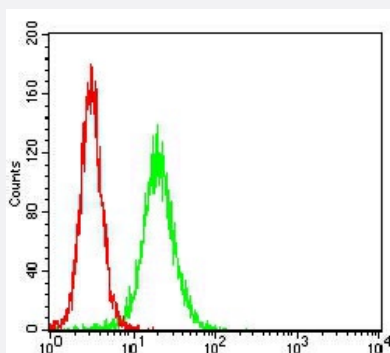
Western Blot (Transfected lysate)

Western blot analysis of Lane 1: HEK293 cell; Lane 2: CTNNBL1-hlgGfC transfected HEK293 cell with CTNNBL1 monoclonal antibody.



Enzyme-linked Immunoabsorbent Assay

ELISA analysis of CTNNBL1 monoclonal antibody, clone 2H10F11.



Flow Cytometry

Flow cytometric analysis of Hela cells with CTNNBL1 monoclonal antibody (green) and negative control (red).

Specification

Product Description

Mouse monoclonal antibody raised against recombinant human CTNNBL1.

Immunogen	Recombinant protein corresponding to amino acid 390-557 of human CTNNBL1 from <i>E. coli</i> .
Host	Mouse
Theoretical MW (kDa)	65.2
Reactivity	Human
Form	Liquid
Isotype	IgG2a
Recommend Usage	ELISA (1:10000) Western Blot (1:500-1:2000) Flow Cytometry (1:200-1:400) The optimal working dilution should be determined by the end user.
Storage Buffer	In PBS (0.05% sodium azide).
Storage Instruction	Store at 4°C. For long term storage store at -20°C. Aliquot to avoid repeated freezing and thawing.
Note	This product contains sodium azide: a POISONOUS AND HAZARDOUS SUBSTANCE which should be handled by trained staff only.

Applications

- Western Blot (Transfected lysate)

Western blot analysis of Lane 1: HEK293 cell; Lane 2: CTNNBL1-hlgGfC transfected HEK293 cell with CTNNBL1 monoclonal antibody.

- Enzyme-linked Immunoabsorbent Assay

ELISA analysis of CTNNBL1 monoclonal antibody, clone 2H10F11.

- Flow Cytometry

Flow cytometric analysis of Hela cells with CTNNBL1 monoclonal antibody (green) and negative control (red).

Gene Info — CTNNBL1

Entrez GeneID	56259
Gene Name	CTNNBL1
Gene Alias	C20orf33, FLJ21108, NAP, NYD-SP19, P14L, PP8304, dJ633O20.1

Gene Description	catenin, beta like 1
Omim ID	611537
Gene Ontology	Hyperlink
Gene Summary	<p>The protein encoded by this gene contains an acidic domain, a putative bipartite nuclear localization signal, a nuclear export signal, a leucine-isoleucine zipper, and phosphorylation motifs. In addition, the encoded protein contains Armadillo/beta-catenin-like repeats, which have been implicated in protein-protein interactions. Although the function of this protein has not been determined, the C-terminal portion of the protein has been shown to possess apoptosis-inducing activity. [provided by RefSeq]</p>
Other Designations	beta catenin-like 1 nuclear associated protein

Disease

- [Asthma](#)
- [Birth Weight](#)
- [Cardiovascular Diseases](#)
- [Diabetes Mellitus](#)
- [Genetic Predisposition to Disease](#)
- [Obesity](#)
- [Tobacco Use Disorder](#)