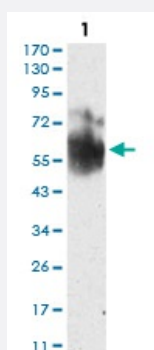


SHC1 monoclonal antibody, clone 2F7C7

Catalog # MAB16610

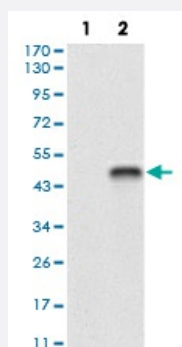
Size 100 ug

Applications



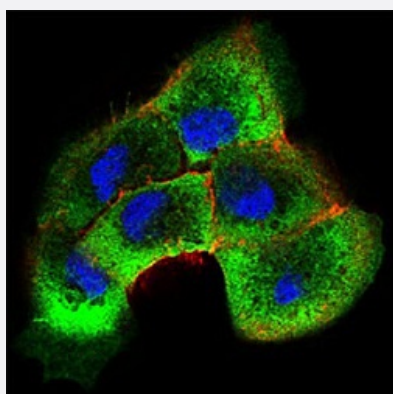
Western Blot (Cell lysate)

Western blot analysis using SHC1 monoclonal antibody against NIH/3T3 cell lysate.



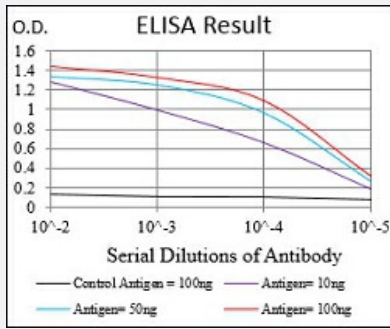
Western Blot (Transfected lysate)

Western blot analysis of Lane 1: HEK293 cell; Lane 2: SHC1-hlgGfC transfected HEK293 cell with SHC1 monoclonal antibody.



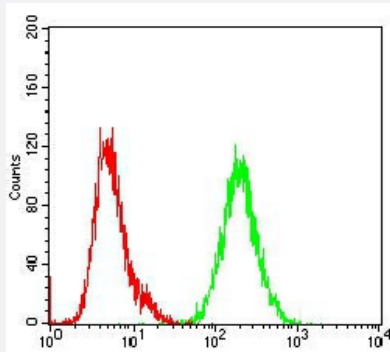
Immunocytochemistry

Immunocytochemical staining of A431 cells with SHC1 monoclonal antibody (green). DRAQ5 fluorescent DNA dye (blue). Actin filaments labeled with Alexa Fluor-555 phalloidin (red).



Enzyme-linked Immunoabsorbent Assay

ELISA analysis of SHC1 monoclonal antibody, clone 2F7C7.



Flow Cytometry

Flow cytometric analysis of NIH/3T3 cells with SHC1 monoclonal antibody (green) and negative control (red).

Specification

Product Description	Mouse monoclonal antibody raised against recombinant human SHC1.
Immunogen	Recombinant protein corresponding to amino acid 385-495 of human SHC1 from <i>E. coli</i> .
Host	Mouse
Theoretical MW (kDa)	62.8
Reactivity	Human, Mouse
Form	Liquid
Isotype	IgG1
Recommend Usage	ELISA (1:10000) Western Blot (1:500-1:2000) Immunocytochemistry (1:200-1:1000) Flow Cytometry (1:200-1:400) The optimal working dilution should be determined by the end user.
Storage Buffer	In PBS (0.05% sodium azide).
Storage Instruction	Store at 4°C. For long term storage store at -20°C. Aliquot to avoid repeated freezing and thawing.

Note

This product contains sodium azide: a POISONOUS AND HAZARDOUS SUBSTANCE which should be handled by trained staff only.

Applications

- Western Blot (Cell lysate)

Western blot analysis using SHC1 monoclonal antibody against NIH/3T3 cell lysate.

- Western Blot (Transfected lysate)

Western blot analysis of Lane 1: HEK293 cell; Lane 2: SHC1-hlgGfc transfected HEK293 cell with SHC1 monoclonal antibody.

- Immunocytochemistry

Immunocytochemical staining of A431 cells with SHC1 monoclonal antibody (green). DRAQ5 fluorescent DNA dye (blue). Actin filaments labeled with Alexa Fluor-555 phalloidin (red).

- Enzyme-linked Immunoabsorbent Assay

ELISA analysis of SHC1 monoclonal antibody, clone 2F7C7.

- Flow Cytometry

Flow cytometric analysis of NIH/3T3 cells with SHC1 monoclonal antibody (green) and negative control (red).

Gene Info — SHC1

Entrez GeneID [6464](#)

Gene Name SHC1

Gene Alias FLJ26504, SHC, SHCA

Gene Description SHC (Src homology 2 domain containing) transforming protein 1

Omim ID [600560](#)

Gene Ontology [Hyperlink](#)

Other Designations OTTHUMP00000035409|OTTHUMP00000035471|SHC (Src homology 2 domain-containing) transforming protein 1|SHC-transforming protein 1

Pathway

- [Chemokine signaling pathway](#)
- [Chronic myeloid leukemia](#)
- [ErbB signaling pathway](#)
- [Focal adhesion](#)
- [Glioma](#)
- [Insulin signaling pathway](#)
- [Natural killer cell mediated cytotoxicity](#)
- [Neurotrophin signaling pathway](#)

Disease

- [Breast cancer](#)
- [Breast Neoplasms](#)
- [Genetic Predisposition to Disease](#)
- [Obesity](#)
- [Tobacco Use Disorder](#)