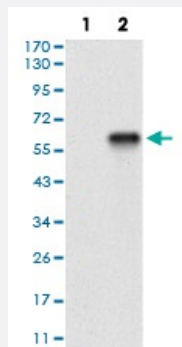


# CD200 monoclonal antibody, clone 6E8B11

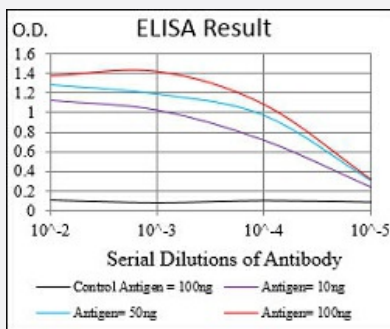
Catalog # MAB16609      Size 100 ug

## Applications



### Western Blot (Transfected lysate)

Western blot analysis of Lane 1: HEK293 cell; Lane 2: CD200-hlgGFc transfected HEK293 cell with CD200 monoclonal antibody.



### Enzyme-linked Immunoabsorbent Assay

ELISA analysis of CD200 monoclonal antibody, clone 6E8B11.

## Specification

Product Description	Mouse monoclonal antibody raised against recombinant human CD200.
Immunogen	Recombinant protein corresponding to amino acid 56-257 of human CD200 from <i>E. coli</i> .
Host	Mouse
Theoretical MW (kDa)	31.3
Reactivity	Human
Form	Liquid
Isotype	IgG2a

<b>Recommend Usage</b>	ELISA (1:10000) Western Blot (1:500-1:2000) The optimal working dilution should be determined by the end user.
<b>Storage Buffer</b>	In PBS (0.05% sodium azide).
<b>Storage Instruction</b>	Store at 4°C. For long term storage store at -20°C. Aliquot to avoid repeated freezing and thawing.
<b>Note</b>	This product contains sodium azide: a POISONOUS AND HAZARDOUS SUBSTANCE which should be handled by trained staff only.

## Applications

- Western Blot (Transfected lysate)

Western blot analysis of Lane 1: HEK293 cell; Lane 2: CD200-hlgGfc transfected HEK293 cell with CD200 monoclonal antibody.

- Enzyme-linked Immunoabsorbent Assay

ELISA analysis of CD200 monoclonal antibody, clone 6E8B11.

## Gene Info — CD200

<b>Entrez GeneID</b>	<a href="#">4345</a>
<b>Gene Name</b>	CD200
<b>Gene Alias</b>	MOX1, MOX2, MRC, OX-2
<b>Gene Description</b>	CD200 molecule
<b>Omim ID</b>	<a href="#">155970</a>
<b>Gene Ontology</b>	<a href="#">Hyperlink</a>
<b>Gene Summary</b>	The protein encoded by this gene is a type-1 membrane glycoprotein, which contains two immunoglobulin domains, and thus belongs to the immunoglobulin superfamily. Studies of the related genes in mouse and rat suggest that this gene may regulate myeloid cell activity and delivers an inhibitory signal for the macrophage lineage in diverse tissues. Multiple alternatively spliced transcript variants that encode different isoforms have been found for this gene. [provided by RefSeq]
<b>Other Designations</b>	CD200 antigen MRC OX-2 antigen OX-2 membrane glycoprotein antigen identified by monoclonal antibody MRC OX-2

## Disease

- [Tobacco Use Disorder](#)