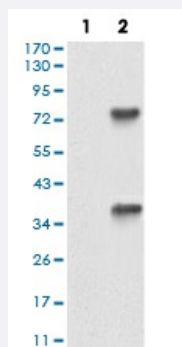


TUBE1 monoclonal antibody, clone 5F3B7

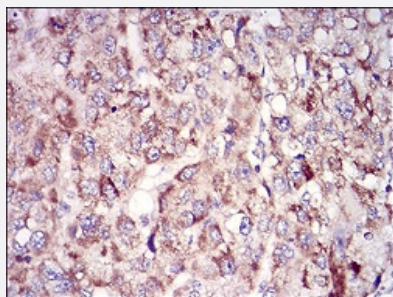
Catalog # MAB16602 Size 100 ug

Applications



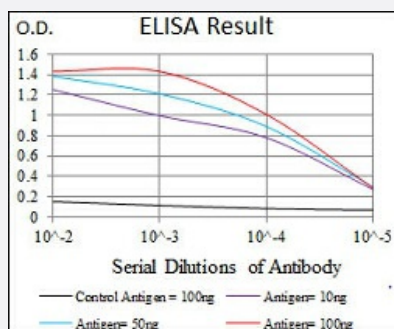
Western Blot (Transfected lysate)

Western blot analysis of Lane 1: HEK293 cell; Lane 2: TUBE1-hlgGfC transfected HEK293 cell with TUBE1 monoclonal antibody.



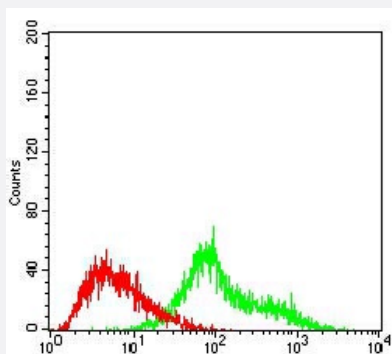
Immunohistochemistry (Formalin/PFA-fixed paraffin-embedded sections)

Immunohistochemical staining of paraffin-embedded liver cancer tissues with TUBE1 monoclonal antibody.



Enzyme-linked Immunoabsorbent Assay

ELISA analysis of TUBE1 monoclonal antibody, clone 5F3B7.



Flow Cytometry

Flow cytometric analysis of Hela cells with TUBE1 monoclonal antibody (green) and negative control (red).

Specification

Product Description	Mouse monoclonal antibody raised against recombinant human TUBE1.
Immunogen	Recombinant protein corresponding to amino acid 314-472 of human TUBE1 from <i>E. coli</i> .
Host	Mouse
Theoretical MW (kDa)	53
Reactivity	Human
Form	Liquid
Isotype	IgG1
Recommend Usage	ELISA (1:10000) Western Blot (1:500-1:2000) Immunohistochemistry (1:200-1:1000) Flow Cytometry (1:200-1:400) The optimal working dilution should be determined by the end user.
Storage Buffer	In PBS (0.05% sodium azide).
Storage Instruction	Store at 4°C. For long term storage store at -20°C. Aliquot to avoid repeated freezing and thawing.
Note	This product contains sodium azide: a POISONOUS AND HAZARDOUS SUBSTANCE which should be handled by trained staff only.

Applications

- Western Blot (Transfected lysate)

Western blot analysis of Lane 1: HEK293 cell; Lane 2: TUBE1-hlgGFc transfected HEK293 cell with TUBE1 monoclonal antibody.

- Immunohistochemistry (Formalin/PFA-fixed paraffin-embedded sections)

Immunohistochemical staining of paraffin-embedded liver cancer tissues with TUBE1 monoclonal antibody.

- Enzyme-linked Immunoabsorbent Assay

ELISA analysis of TUBE1 monoclonal antibody, clone 5F3B7.

- Flow Cytometry

Flow cytometric analysis of Hela cells with TUBE1 monoclonal antibody (green) and negative control (red).

Gene Info — TUBE1

Entrez GeneID [51175](#)

Gene Name TUBE1

Gene Alias FLJ22589, TUBE, dJ142L7.2

Gene Description tubulin, epsilon 1

Omim ID [607345](#)

Gene Ontology [Hyperlink](#)

Gene Summary This gene encodes a member of the tubulin superfamily. This protein localizes to the centriolar sub-distal appendages that are associated with the older of the two centrioles after centrosome duplication. This protein plays a central role in organization of the microtubules during centriole duplication. A pseudogene of this gene is found on chromosome 5

Other Designations OTTHUMP00000017033|OTTHUMP00000040425|epsilon-tubulin