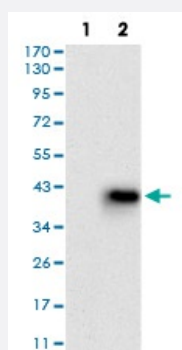


MMEL1 monoclonal antibody, clone 2D2H5

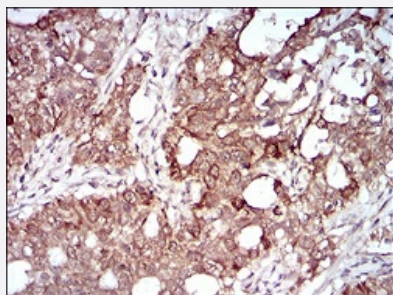
Catalog # MAB16600 Size 100 ug

Applications



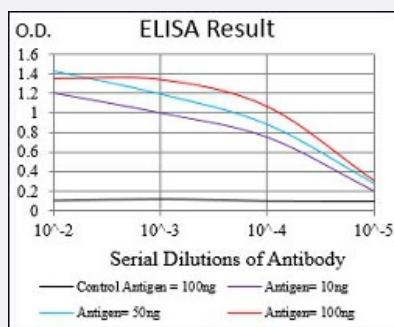
Western Blot (Transfected lysate)

Western blot analysis of Lane 1: HEK293 cell; Lane 2: MMEL1-hlgGfC transfected HEK293 cell with MMEL1 monoclonal antibody.



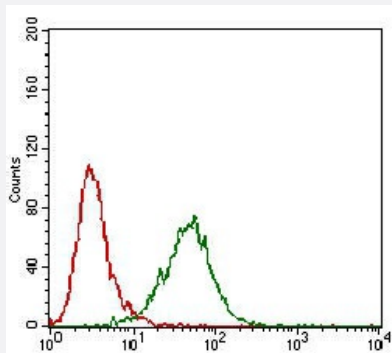
Immunohistochemistry (Formalin/PFA-fixed paraffin-embedded sections)

Immunohistochemical staining of paraffin-embedded cervical cancer tissues with MMEL1 monoclonal antibody.



Enzyme-linked Immunoabsorbent Assay

ELISA analysis of MMEL1 monoclonal antibody, clone 2D2H5.



Flow Cytometry

Flow cytometric analysis of Hela cells with MMEL1 monoclonal antibody (green) and negative control (red).

Specification

Product Description	Mouse monoclonal antibody raised against recombinant human MMEL1.
Immunogen	Recombinant protein corresponding to amino acid 1-107 of human MMEL1 from <i>E. coli</i> .
Host	Mouse
Theoretical MW (kDa)	89.4
Reactivity	Human
Form	Liquid
Isotype	IgG1
Recommend Usage	ELISA (1:10000) Western Blot (1:500-1:2000) Immunohistochemistry (1:200-1:1000) Flow Cytometry (1:200-1:400) The optimal working dilution should be determined by the end user.
Storage Buffer	In PBS (0.05% sodium azide).
Storage Instruction	Store at 4°C. For long term storage store at -20°C. Aliquot to avoid repeated freezing and thawing.
Note	This product contains sodium azide: a POISONOUS AND HAZARDOUS SUBSTANCE which should be handled by trained staff only.

Applications

- Western Blot (Transfected lysate)

Western blot analysis of Lane 1: HEK293 cell; Lane 2: MMEL1-hlgGfc transfected HEK293 cell with MMEL1 monoclonal antibody.

- Immunohistochemistry (Formalin/PFA-fixed paraffin-embedded sections)

Immunohistochemical staining of paraffin-embedded cervical cancer tissues with MMEL1 monoclonal antibody.

- Enzyme-linked Immunoabsorbent Assay

ELISA analysis of MMEL1 monoclonal antibody, clone 2D2H5.

- Flow Cytometry

Flow cytometric analysis of Hela cells with MMEL1 monoclonal antibody (green) and negative control (red).

Gene Info — MMEL1

Entrez GeneID [79258](#)

Gene Name MMEL1

Gene Alias MGC119454, MGC119455, MGC119456, MMEL2, NEP2, NEPII, NL1, NL2, SEP

Gene Description membrane metallo-endopeptidase-like 1

Gene Ontology [Hyperlink](#)

Gene Summary The protein encoded by this gene is a member of the neutral endopeptidase (NEP) or membrane metallo-endopeptidase (MME) family. Family members play important roles in pain perception, arterial pressure regulation, phosphate metabolism and homeostasis. This protein is a type II trans membrane protein and is thought to be expressed as a secreted protein. This gene is expressed mainly in testis with weak expression in the brain, kidney, and heart. [provided by RefSeq]

Other Designations membrane metallo-endopeptidase-like 2|neprilysin-2|soluble secreted endopeptidase|zinc metalloproteinase

Disease

- [Arthritis](#)
- [Celiac Disease](#)
- [Cleft Lip](#)
- [Cleft Palate](#)

- [Disease Progression](#)
- [Genetic Predisposition to Disease](#)
- [Inflammation](#)
- [Liver Cirrhosis](#)
- [Wegener Granulomatosis](#)