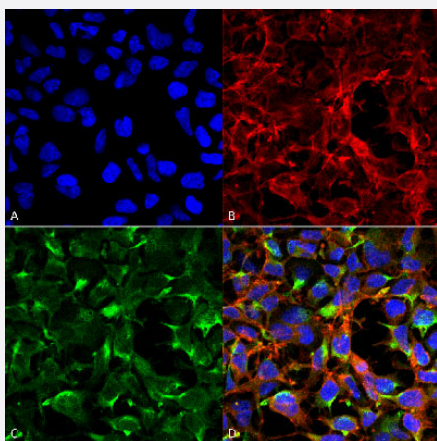


# Dityrosine monoclonal antibody, clone 7D4

Catalog # MAB16494      Size 100 ug

## Applications



### Immunocytochemistry

Immunocytochemical staining of HEK293 with Dityrosine monoclonal antibody, clone 7D4 (Cat # MAB16494). (A) DAPI (blue) nuclear stain, (B) Phalloidin Alex Fluor 633 F-Actin stain, (C) Dityrosine Antibody and (D) Composite.

## Specification

<b>Product Description</b>	Mouse monoclonal antibody raised against synthetic Dityrosine (DT).
<b>Immunogen</b>	Synthetic Dityrosine conjugated to Keyhole Limpet Hemocyanin (KLH).
<b>Host</b>	Mouse
<b>Reactivity</b>	Human
<b>Form</b>	Liquid
<b>Purification</b>	Protein G purification
<b>Isotype</b>	IgG1
<b>Recommend Usage</b>	ELISA (1:1000) Immunocytochemistry (1:50) Immunofluorescence (1:50) Western Blot (1:1000) The optimal working dilution should be determined by the end user.

<b>Storage Buffer</b>	In PBS, pH 7.4 (50% glycerol, 0.09% sodium azide).
<b>Storage Instruction</b>	Store at -20°C.
<b>Note</b>	This product contains sodium azide: a POISONOUS AND HAZARDOUS SUBSTANCE which should be handled by trained staff only.

## Applications

- Western Blot

- Immunocytochemistry

Immunocytochemical staining of HEK293 with Dityrosine monoclonal antibody, clone 7D4 (Cat # MAB16494). (A) DAPI (blue) nuclear stain, (B) Phalloidin Alex Fluor 633 F-Actin stain, (C) Dityrosine Antibody and (D) Composite.

- Immunofluorescence

- Enzyme-linked Immunoabsorbent Assay