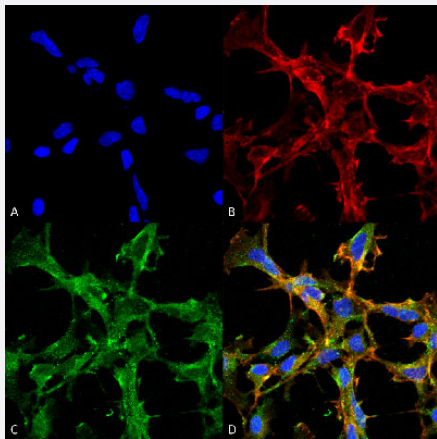


# Citrulline monoclonal antibody, clone 2D3.1

Catalog # MAB16472      Size 100 ug

## Applications



### Immunocytochemistry

Immunocytochemical staining of HEK293 with Citrulline monoclonal antibody, clone 2D3.1 (Cat # MAB16472). (A) DAPI (blue) nuclear stain, (B) Phalloidin Alex Fluor 633 F-Actin stain, (C) Citrulline Antibody and (D) Composite.

## Specification

<b>Product Description</b>	Mouse monoclonal antibody raised against synthetic peptide of Citrulline.
<b>Immunogen</b>	Synthetic L-Citrulline conjugated to Keyhole Limpet Hemocyanin (KLH).
<b>Host</b>	Mouse
<b>Reactivity</b>	Human
<b>Form</b>	Liquid
<b>Purification</b>	Protein G purification
<b>Isotype</b>	IgG1
<b>Recommend Usage</b>	ELISA (1:1000) Immunocytochemistry (1:50) Immunofluorescence (1:50) Western Blot (1:1000) The optimal working dilution should be determined by the end user.

Storage Buffer	In PBS, pH 7.4 (50% glycerol, 0.09% sodium azide).
Storage Instruction	Store at -20°C.
Note	This product contains sodium azide: a POISONOUS AND HAZARDOUS SUBSTANCE which should be handled by trained staff only.

## Applications

- Western Blot

- Immunocytochemistry

Immunocytochemical staining of HEK293 with Citrulline monoclonal antibody, clone 2D3.1 (Cat # MAB16472). (A) DAPI (blue) nuclear stain, (B) Phalloidin Alex Fluor 633 F-Actin stain, (C) Citrulline Antibody and (D) Composite.

- Immunofluorescence

- Enzyme-linked Immunoabsorbent Assay