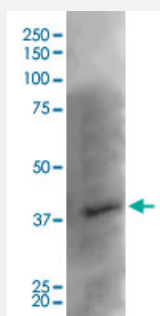


# Kcnj8 monoclonal antibody, clone S366-60 (Biotin)

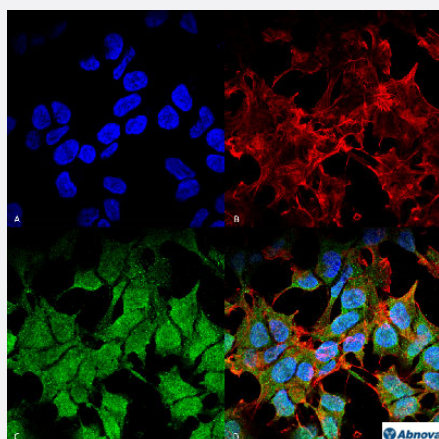
Catalog # MAB16467      Size 100 ug

## Applications



### Western Blot (Tissue lysate)

Western Blot analysis of rat brain with Kcnj8 monoclonal antibody, clone S366-60 (Biotin) (Cat # MAB16467).



### Immunocytochemistry

Immunocytochemical staining of SK-N-BE with Kcnj8 monoclonal antibody, clone S366-60 (Biotin) (Cat # MAB16467). (A) DAPI (blue) nuclear stain, (B) Phalloidin Texas Red F-Actin stain, (C) Kcnj8 Antibody and (D) Composite.

## Specification

<b>Product Description</b>	Mouse monoclonal antibody raised against partial recombinant rat Kcnj8.
<b>Immunogen</b>	Recombinant protein corresponding to amino acids 306-424 at C-terminus of rat Kcnj8.
<b>Host</b>	Mouse
<b>Reactivity</b>	Rat
<b>Form</b>	Liquid

Conjugation	Biotin
Purification	Protein G purification
Isotype	IgG2a
Recommend Usage	Immunocytochemistry (1:100) Immunofluorescence (1:100) Immunohistochemistry (Formalin/PFA-fixed paraffin-embedded sections) Western Blot (1:1000) The optimal working dilution should be determined by the end user.
Storage Buffer	In PBS, pH 7.4 (50% glycerol, 0.09% sodium azide).
Storage Instruction	Store at -20°C.
Note	This product contains sodium azide: a POISONOUS AND HAZARDOUS SUBSTANCE which should be handled by trained staff only.

## Applications

- Western Blot (Tissue lysate)

Western Blot analysis of rat brain with Kcnj8 monoclonal antibody, clone S366-60 (Biotin) (Cat # MAB16467).

- Immunohistochemistry (Formalin/PFA-fixed paraffin-embedded sections)

- Immunocytochemistry

Immunocytochemical staining of SK-N-BE with Kcnj8 monoclonal antibody, clone S366-60 (Biotin) (Cat # MAB16467). (A) DAPI (blue) nuclear stain, (B) Phalloidin Texas Red F-Actin stain, (C) Kcnj8 Antibody and (D) Composite.

- Immunofluorescence

## Gene Info — Kcnj8

Entrez GeneID	<a href="#">25472</a>
Protein Accession#	<a href="#">Q63664</a>
Gene Name	Kcnj8
Gene Alias	Kir6.1, UKATP1, uKATP-1
Gene Description	potassium inwardly-rectifying channel, subfamily J, member 8

**Gene Ontology**[Hyperlink](#)**Gene Summary**

subfamily J

**Other Designations**

Inwardly rectifying potassium channel gene subfamily J-8 (ATP sensitive)|Inwardly rectifying potassium channel gene, subfamily J-8 (ATP sensitive)

## Publication Reference

- [Heterogeneity of IK1 in the mouse heart.](#)

Panama BK, McLerie M, Lopatin AN.

American Journal of Physiology. Heart and Circulatory Physiology 2007 Dec; 293(6):H3558.

- [Kir2.3 isoform confers pH sensitivity to heteromeric Kir2.1/Kir2.3 channels in HEK293 cells.](#)

Munoz V, Vaidyanathan R, Tolkacheva EG, Dhamoon AS, Taffet SM, Anumonwo JM.

Heart Rhythm 2007 Apr; 4(4):487.

- [Molecular dissection of the inward rectifier potassium current \(IK1\) in rabbit cardiomyocytes: evidence for heteromeric co-assembly of Kir2.1 and Kir2.2.](#)

Zobel C, Cho HC, Nguyen TT, Pekhletski R, Diaz RJ, Wilson GJ, Backx PH.

The Journal of Physiology 2003 Jul; 550(Pt 2):365.

- [Toward understanding the assembly and structure of KATP channels.](#)

Aguilar-Bryan L, Clement JP 4th, Gonzalez G, Kunjilwar K, Babenko A, Bryan J.

Physiological Reviews 1998 Jan; 78(1):227.