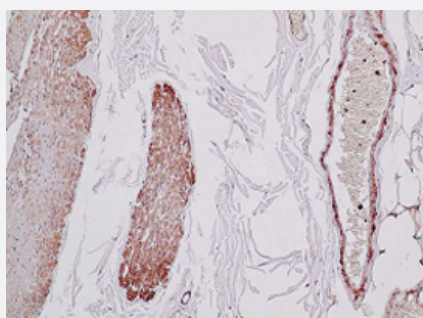


ACTB monoclonal antibody, clone S12-I

Catalog # MAB1644 Size 100 uL

Applications



Immunohistochemistry (Formalin/PFA-fixed paraffin-embedded sections)

Formalin-fixed and paraffin-embedded human stomach tissue (4 um) stained with ACTB monoclonal antibody, clone S12-I (Cat # MAB1644) shows strong positive immunostaining of smooth muscle cells. Kindly performed and provided by Katarina Poliakova, MD and Lubomir Straka, MD, Ph. D. from Clinical Pathology Presov, Ltd., Presov, Slovakia.

Specification

Product Description	Rabbit monoclonal antibody raised against synthetic peptide of ACTB.
Immunogen	A synthetic peptide corresponding to C-terminus of human ACTB.
Host	Rabbit
Reactivity	Human
Form	Liquid
Isotype	IgG
Quality Control Testing	Antibody Reactive Against Synthetic Peptide.
Recommend Usage	Immunohistochemistry (Formalin/PFA-fixed paraffin-embedded sections) (1:100) The optimal working dilution should be determined by the end user.
Storage Buffer	In 20 mM Tris-HCl, pH 8.0 (20 mg/mL BSA, 0.05% sodium azide)
Storage Instruction	Store at 4°C.
Note	This product contains sodium azide: a POISONOUS AND HAZARDOUS SUBSTANCE which should be handled by trained staff only.

Applications

- Immunohistochemistry (Formalin/PFA-fixed paraffin-embedded sections)

Formalin-fixed and paraffin-embedded human stomach tissue (4 um) stained with ACTB monoclonal antibody, clone S12-I (Cat # MAB1644) shows strong positive immunostaining of smooth muscle cells. Kindly performed and provided by Katarina Poliaková, MD and Lubomir Straka, MD, Ph. D. from Clinical Pathology Presov, Ltd., Presov, Slovakia.

Gene Info — ACTB

Entrez GeneID	60
Gene Name	ACTB
Gene Alias	PS1TP5BP1
Gene Description	actin, beta
Omim ID	102630
Gene Ontology	Hyperlink
Gene Summary	This gene encodes one of six different actin proteins. Actins are highly conserved proteins that are involved in cell motility, structure, and integrity. This actin is a major constituent of the contractile apparatus and one of the two nonmuscle cytoskeletal actins. [provided by RefSeq]
Other Designations	PS1TP5-binding protein 1 actin, cytoplasmic 1 beta actin beta cytoskeletal actin

Pathway

- [Adherens junction](#)
- [Arrhythmogenic right ventricular cardiomyopathy \(ARVC\)](#)
- [Focal adhesion](#)
- [Hypertrophic cardiomyopathy \(HCM\)](#)
- [Leukocyte transendothelial migration](#)
- [Pathogenic Escherichia coli infection - EHEC](#)
- [Regulation of actin cytoskeleton](#)

- [Tight junction](#)
- [Vibrio cholerae infection](#)

Disease

- [Breast cancer](#)
- [Breast Neoplasms](#)