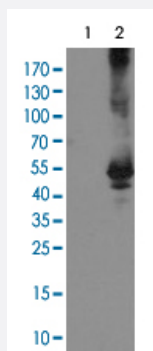


# TDO2 monoclonal antibody, clone 4G2

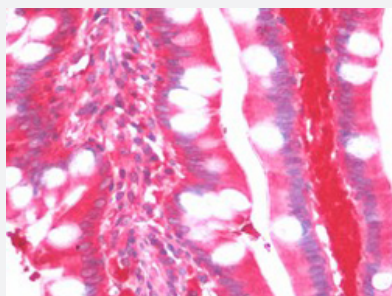
Catalog # MAB16405      Size 50 uL

## Applications



### Western Blot (Transfected lysate)

Western Blot analysis of HEK293T cells (Lane 1: transfected with pCMV6-ENTRY control and Lane 2: transfected with pCMV6-ENTRY TDO2 cDNA) with TDO2 monoclonal antibody, clone 4G2 (Cat # MAB16405).



### Immunohistochemistry (Formalin/PFA-fixed paraffin-embedded sections)

Immunohistochemical staining (Formalin-fixed paraffin-embedded sections) of human small intestine with TDO2 monoclonal antibody, clone 4G2 (Cat # MAB16405).

## Specification

<b>Product Description</b>	Mouse monoclonal antibody raised against full length recombinant human TDO2.
<b>Immunogen</b>	Recombinant protein corresponding to full length human TDO2 from HEK293T cell.
<b>Host</b>	Mouse
<b>Reactivity</b>	Human
<b>Form</b>	Liquid
<b>Purification</b>	Protein A/G purification

Isotype	IgG2a
Recommend Usage	Immunohistochemistry (Formalin/PFA-fixed paraffin-embedded sections) (10 ug/mL) Western Blot (1:2000) The optimal working dilution should be determined by the end user.
Storage Buffer	In PBS, pH 7.3 (50% glycerol, 1% BSA, 0.02% sodium azide).
Storage Instruction	Store at -20°C. Aliquot to avoid repeated freezing and thawing.
Note	This product contains sodium azide: a POISONOUS AND HAZARDOUS SUBSTANCE which should be handled by trained staff only.

## Applications

- Western Blot (Transfected lysate)

Western Blot analysis of HEK293T cells (Lane 1: transfected with pCMV6-ENTRY control and Lane 2: transfected with pCMV6-ENTRY TDO2 cDNA) with TDO2 monoclonal antibody, clone 4G2 (Cat # MAB16405).

- Immunohistochemistry (Formalin/PFA-fixed paraffin-embedded sections)

Immunohistochemical staining (Formalin-fixed paraffin-embedded sections) of human small intestine with TDO2 monoclonal antibody, clone 4G2 (Cat # MAB16405).

## Gene Info — TDO2

Entrez GeneID	<a href="#">6999</a>
Protein Accession#	<a href="#">P48775</a>
Gene Name	TDO2
Gene Alias	TDO, TPH2, TRPO
Gene Description	tryptophan 2,3-dioxygenase
Omim ID	<a href="#">191070</a>
Gene Ontology	<a href="#">Hyperlink</a>
Gene Summary	Tryptophan 2,3-dioxygenase (EC 1.13.11.11) plays a role in catalyzing the first and rate-limiting step in the kynurenine pathway, the major pathway of tryptophan metabolism.[supplied by OMIM]
Other Designations	Tryptophan oxygenase

## Pathway

- [Metabolic pathways](#)
- [Tryptophan metabolism](#)

## Disease

- [Bipolar Disorder](#)
- [Genetic Predisposition to Disease](#)
- [Postmortem Changes](#)
- [Schizophrenia](#)