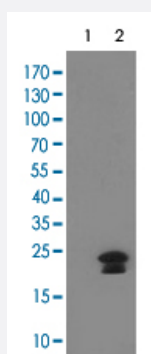


HAND1 monoclonal antibody, clone 1G10

Catalog # MAB16373

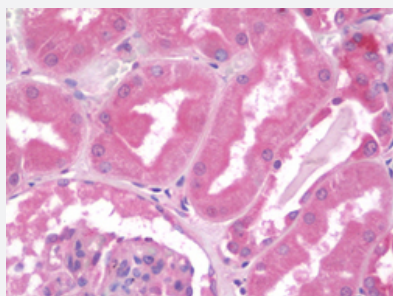
Size 50 uL

Applications



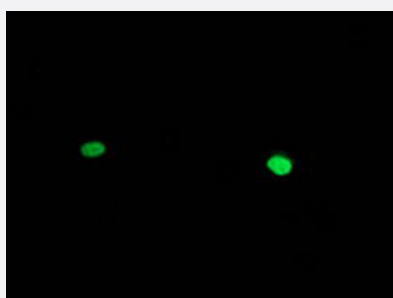
Western Blot (Transfected lysate)

Western Blot analysis of HEK293T cells (Lane 1: transfected with pCMV6-ENTRY control and Lane 2: transfected with pCMV6-ENTRY HAND1 cDNA) with HAND1 monoclonal antibody, clone 1G10 (Cat # MAB16373).



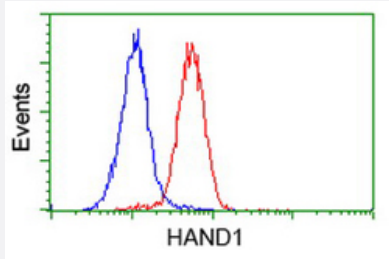
Immunohistochemistry (Formalin/PFA-fixed paraffin-embedded sections)

Immunohistochemical staining (Formalin-fixed paraffin-embedded sections) of human kidney with HAND1 monoclonal antibody, clone 1G10 (Cat # MAB16373).



Immunofluorescence

Immunofluorescent staining of COS7 cells transiently transfected by pCMV6-ENTRY HAND1 with HAND1 monoclonal antibody, clone 1G10 (Cat # MAB16373).



Flow Cytometry

Flow cytometric analysis of HeLa cells with HAND1 monoclonal antibody, clone 1G10 (Cat # MAB16373) (Red).

Specification

Product Description	Mouse monoclonal antibody raised against full length recombinant human HAND1.
Immunogen	Recombinant protein corresponding to full length human HAND1 from <i>E. coli</i> .
Host	Mouse
Reactivity	Human
Form	Liquid
Purification	Protein A/G purification
Isotype	IgG2b
Recommend Usage	Flow Cytometry (1:100) Immunofluorescence (1:100) Immunohistochemistry (Formalin/PFA-fixed paraffin-embedded sections) (10 ug/mL) Western Blot (1:500) The optimal working dilution should be determined by the end user.
Storage Buffer	In PBS, pH 7.3 (50% glycerol, 1% BSA, 0.02% sodium azide).
Storage Instruction	Store at -20°C. Aliquot to avoid repeated freezing and thawing.
Note	This product contains sodium azide: a POISONOUS AND HAZARDOUS SUBSTANCE which should be handled by trained staff only.

Applications

- Western Blot (Transfected lysate)

Western Blot analysis of HEK293T cells (Lane 1: transfected with pCMV6-ENTRY control and Lane 2: transfected with pCMV6-ENTRY HAND1 cDNA) with HAND1 monoclonal antibody, clone 1G10 (Cat # MAB16373).

- Immunohistochemistry (Formalin/PFA-fixed paraffin-embedded sections)

Immunohistochemical staining (Formalin-fixed paraffin-embedded sections) of human kidney with HAND1 monoclonal antibody, clone 1G10 (Cat # MAB16373).

- Immunofluorescence

Immunofluorescent staining of COS7 cells transiently transfected by pCMV6-ENTRY HAND1 with HAND1 monoclonal antibody, clone 1G10 (Cat # MAB16373).

- Flow Cytometry

Flow cytometric analysis of HeLa cells with HAND1 monoclonal antibody, clone 1G10 (Cat # MAB16373) (Red).

Gene Info — HAND1

Entrez GeneID [9421](#)

Protein Accession# [O96004](#)

Gene Name HAND1

Gene Alias Hxt, Thing1, bHLHa27, eHand

Gene Description heart and neural crest derivatives expressed 1

Omim ID [602406](#)

Gene Ontology [Hyperlink](#)

Gene Summary The protein encoded by this gene belongs to the basic helix-loop-helix family of transcription factors. This gene product is one of two closely related family members, the HAND proteins, which are asymmetrically expressed in the developing ventricular chambers and play an essential role in cardiac morphogenesis. Working in a complementary fashion, they function in the formation of the right ventricle and aortic arch arteries, implicating them as mediators of congenital heart disease. In addition, it has been suggested that this transcription factor may be required for early trophoblast differentiation. [provided by RefSeq]

Other Designations basic helix-loop-helix transcription factor HAND1

Disease

- [Heart Septal Defects](#)