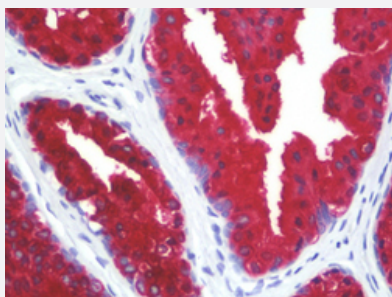


KRT18 monoclonal antibody, clone C-04 (Biotin)

Catalog # MAB16360 Size 50 ug

Applications



Immunohistochemistry (Formalin/PFA-fixed paraffin-embedded sections)

Immunohistochemical staining (Formalin-fixed paraffin-embedded sections) of human prostate with KRT18 monoclonal antibody, clone C-04 (Biotin) (Cat # MAB16360).

Specification

Product Description	Mouse monoclonal antibody raised against human KRT18.
Immunogen	Cytoskeleton preparation of epidermal carcinoma cell line A431.
Host	Mouse
Reactivity	Human
Form	Liquid
Conjugation	Biotin
Purification	Protein A purification
Isotype	IgG1
Recommend Usage	Flow Cytometry (1:500) Immunohistochemistry (Formalin/PFA-fixed paraffin-embedded sections) (10 ug/mL) The optimal working dilution should be determined by the end user.
Storage Buffer	In PBS, pH 7.4 (0.09% sodium azide).
Storage Instruction	Store at 4°C. Do not freeze.

Note

This product contains sodium azide: a POISONOUS AND HAZARDOUS SUBSTANCE which should be handled by trained staff only.

Applications

- Immunohistochemistry (Formalin/PFA-fixed paraffin-embedded sections)

Immunohistochemical staining (Formalin-fixed paraffin-embedded sections) of human prostate with KRT18 monoclonal antibody, clone C-04 (Biotin) (Cat # MAB16360).

- Flow Cytometry

Gene Info — KRT18

Entrez GeneID [3875](#)

Protein Accession# [P05783](#)

Gene Name KRT18

Gene Alias CYK18, K18

Gene Description keratin 18

Omim ID [148070 215600](#)

Gene Ontology [Hyperlink](#)

Gene Summary KRT18 encodes the type I intermediate filament chain keratin 18. Keratin 18, together with its filament partner keratin 8, are perhaps the most commonly found members of the intermediate filament gene family. They are expressed in single layer epithelial tissues of the body. Mutations in this gene have been linked to cryptogenic cirrhosis. Two transcript variants encoding the same protein have been found for this gene. [provided by RefSeq]

Other Designations cell proliferation-inducing protein 46|cytokeratin 18

Pathway

- [Pathogenic Escherichia coli infection - EHEC](#)

Disease

- [Cleft Lip](#)
- [Cleft Palate](#)
- [Drug-Induced Liver Injury](#)
- [Genetic Predisposition to Disease](#)
- [Liver Cirrhosis](#)
- [Liver Failure](#)