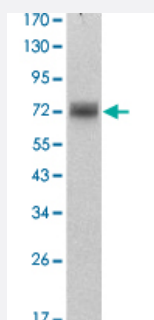


ZBTB16 monoclonal antibody, clone 5B3

Catalog # MAB16321

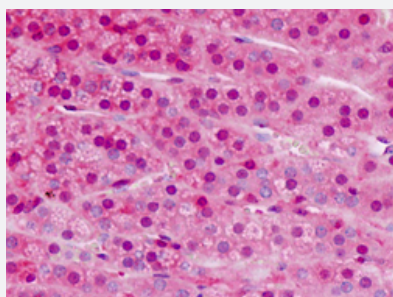
Size 50 uL

Applications



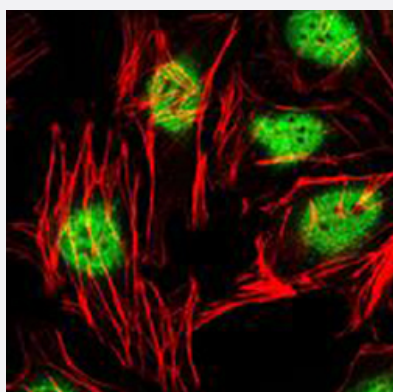
Western Blot (Cell lysate)

Western Blot analysis of HeLa cell lysate with ZBTB16 monoclonal antibody, clone 5B3 (Cat # MAB16321).



Immunohistochemistry (Formalin/PFA-fixed paraffin-embedded sections)

Immunohistochemical staining (Formalin-fixed paraffin-embedded sections) of human adrenal with ZBTB16 monoclonal antibody, clone 5B3 (Cat # MAB16321).



Immunofluorescence

Immunofluorescent staining of HeLa cells with ZBTB16 monoclonal antibody, clone 5B3 (Cat # MAB16321) (Green).

Specification

Product Description

Mouse monoclonal antibody raised against recombinant human ZBTB16.

Immunogen	Recombinant protein corresponding to human ZBTB16 from <i>E. coli</i> .
Host	Mouse
Reactivity	Human
Form	Liquid
Isotype	IgG1
Recommend Usage	ELISA (1:10000) Immunocytochemistry (1:200-1:1000) Immunofluorescence (1:1000) Immunohistochemistry (Formalin/PFA-fixed paraffin-embedded sections) (1:50) Western Blot (1:500-1:2000) The optimal working dilution should be determined by the end user.
Storage Buffer	In ascites (0.03% sodium azide).
Storage Instruction	Store at 4°C. For long term storage store at -20°C. Aliquot to avoid repeated freezing and thawing.
Note	This product contains sodium azide: a POISONOUS AND HAZARDOUS SUBSTANCE which should be handled by trained staff only.

Applications

- Western Blot (Cell lysate)

Western Blot analysis of HeLa cell lysate with ZBTB16 monoclonal antibody, clone 5B3 (Cat # MAB16321).

- Immunohistochemistry (Formalin/PFA-fixed paraffin-embedded sections)

Immunohistochemical staining (Formalin-fixed paraffin-embedded sections) of human adrenal with ZBTB16 monoclonal antibody, clone 5B3 (Cat # MAB16321).

- Immunocytochemistry

- Immunofluorescence

Immunofluorescent staining of HeLa cells with ZBTB16 monoclonal antibody, clone 5B3 (Cat # MAB16321) (Green).

- Enzyme-linked Immunoabsorbent Assay

Gene Info — ZBTB16

Entrez GeneID

[7704](#)

Protein Accession#	Q05516
Gene Name	ZBTB16
Gene Alias	PLZF, ZNF145
Gene Description	zinc finger and BTB domain containing 16
Omim ID	176797
Gene Ontology	Hyperlink
Gene Summary	This gene is a member of the Krueppel C2H2-type zinc-finger protein family and encodes a zinc finger transcription factor that contains nine Kruppel-type zinc finger domains at the carboxyl terminus. This protein is located in the nucleus, is involved in cell cycle progression, and interacts with a histone deacetylase. Specific instances of aberrant gene rearrangement at this locus have been associated with acute promyelocytic leukemia (APL). Alternate transcriptional splice variants have been characterized. [provided by RefSeq]
Other Designations	Kruppel-like zinc finger protein promyelocytic leukemia zinc finger protein zinc finger protein 145 (Kruppel-like, expressed in promyelocytic leukemia)

Pathway

- [Acute myeloid leukemia](#)
- [Pathways in cancer](#)

Disease

- [Cardiovascular Diseases](#)
- [Diabetes Mellitus](#)
- [Edema](#)
- [Heart Defects](#)
- [Leukemia](#)
- [Tobacco Use Disorder](#)