

MKNK1 monoclonal antibody, clone 24C2

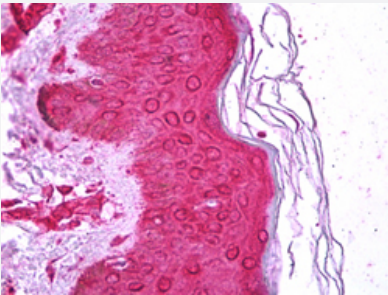
Catalog # MAB16221 Size 50 uL

Applications



Western Blot (Cell lysate)

Western Blot analysis of Lane 1: HeLa, Lane 2: MCF-7, Lane 3: NIH3T3 and Lane 4: H9C2 cell lysates with MKNK1 monoclonal antibody, clone 24C2 (Cat # MAB16221).



Immunohistochemistry (Formalin/PFA-fixed paraffin-embedded sections)

Immunohistochemical staining (Formalin-fixed paraffin-embedded sections) of human skin with MKNK1 monoclonal antibody, clone 24C2 (Cat # MAB16221).

Specification

Product Description	Mouse monoclonal antibody raised against recombinant human MKNK1.
Immunogen	Recombinant His fusion protein corresponding to amino acids 1-362 of human MKNK1 from <i>E. coli</i> .
Host	Mouse
Reactivity	Human
Form	Liquid
Purification	Ammonium sulfate precipitation

Isotype	IgG1, kappa
Recommend Usage	ELISA Immunohistochemistry (Formalin/PFA-fixed paraffin-embedded sections) (1:400) Western Blot (1:1000) The optimal working dilution should be determined by the end user.
Storage Buffer	In HEPES, 150 mM NaCl (50% glycerol, 0.01% BSA, 0.03% sodium azide).
Storage Instruction	Store at 4°C. For long term storage store at -20°C. Aliquot to avoid repeated freezing and thawing.
Note	This product contains sodium azide: a POISONOUS AND HAZARDOUS SUBSTANCE which should be handled by trained staff only.

Applications

- Western Blot (Cell lysate)

Western Blot analysis of Lane 1: HeLa, Lane 2: MCF-7, Lane 3: NIH3T3 and Lane 4: H9C2 cell lysates with MKNK1 monoclonal antibody, clone 24C2 (Cat # MAB16221).

- Immunohistochemistry (Formalin/PFA-fixed paraffin-embedded sections)

Immunohistochemical staining (Formalin-fixed paraffin-embedded sections) of human skin with MKNK1 monoclonal antibody, clone 24C2 (Cat # MAB16221).

- Enzyme-linked Immunoabsorbent Assay

Gene Info — MKNK1

Entrez GeneID	8569
Protein Accession#	Q9BUB5
Gene Name	MKNK1
Gene Alias	MNK1
Gene Description	MAP kinase interacting serine/threonine kinase 1
Omim ID	606724
Gene Ontology	Hyperlink
Other Designations	MAP kinase interacting kinase 1 MAP kinase-interacting serine/threonine kinase 1 OTTHUMP0000009674

Pathway

- [Insulin signaling pathway](#)
- [MAPK signaling pathway](#)

Disease

- [Tobacco Use Disorder](#)