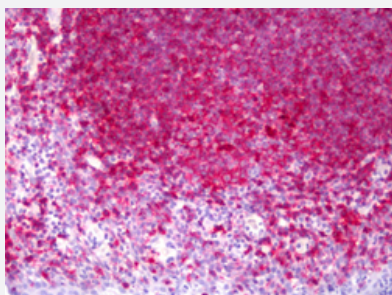


# MHC Class II monoclonal antibody, clone TDR31.1

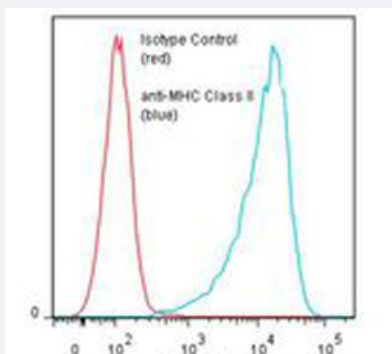
Catalog # MAB16190      Size 50 ug

## Applications



### Immunohistochemistry (Formalin/PFA-fixed paraffin-embedded sections)

Immunohistochemical staining (Formalin-fixed paraffin-embedded sections) of human tonsil with MHC Class II monoclonal antibody, clone TDR31.1 (Cat # MAB16190).



### Flow Cytometry

Flow cytometric analysis of Daudi cells with MHC Class II monoclonal antibody, clone TDR31.1 (Cat # MAB16190).

## Specification

<b>Product Description</b>	Mouse monoclonal antibody raised against human MHC Class II.
<b>Immunogen</b>	Purified MHC Class II from JY cell line.
<b>Host</b>	Mouse
<b>Reactivity</b>	Human
<b>Form</b>	Liquid
<b>Purification</b>	Protein A purification

<b>Isotype</b>	IgG1
<b>Recommend Usage</b>	Flow Cytometry Immunohistochemistry (Formalin/PFA-fixed paraffin-embedded sections) (10 ug/mL) Immunohistochemistry (Frozen sections) Western Blot The optimal working dilution should be determined by the end user.
<b>Storage Buffer</b>	In 50 mM Na <sub>3</sub> PO <sub>4</sub> , 100 mM KCl, 150 mM NaCl, pH 7.5 (0.5 mg/mL Gentamicin sulfate).
<b>Storage Instruction</b>	Store at 4°C. Do not freeze.

## Applications

- Western Blot
- Immunohistochemistry (Formalin/PFA-fixed paraffin-embedded sections)  
Immunohistochemical staining (Formalin-fixed paraffin-embedded sections) of human tonsil with MHC Class II monoclonal antibody, clone TDR31.1 (Cat # MAB16190).
- Immunohistochemistry (Frozen sections)
- Flow Cytometry  
Flow cytometric analysis of Daudi cells with MHC Class II monoclonal antibody, clone TDR31.1 (Cat # MAB16190).