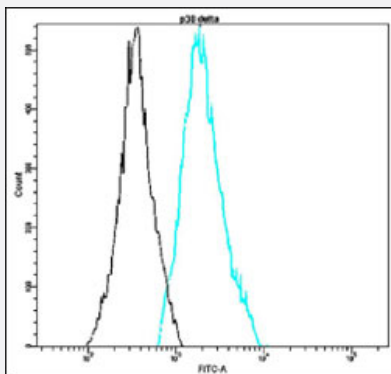


MAPK13 monoclonal antibody, clone R12-L (FITC)

Catalog # MAB16013 Size 1000 uL

Applications



Flow Cytometry

Flow cytometric analysis of HEK293 cells with MAPK13 monoclonal antibody, clone R12-L (FITC) (Cat # MAB16013).

Specification

Product Description Rabbit monoclonal antibody raised against synthetic peptide of human MAPK13.

Host Rabbit

Reactivity Human

Form Liquid

Conjugation FITC

Purification EVAC purification

Isotype IgG

Recommend Usage Flow Cytometry
The optimal working dilution should be determined by the end user.

Storage Buffer In PBS (10 mg/mL BSA, 0.05% Sodium Azide).

Storage Instruction Store in the dark at 4°C. Avoid prolonged exposure to light. Do not freeze.

Note

This product contains sodium azide: a POISONOUS AND HAZARDOUS SUBSTANCE which should be handled by trained staff only.

Applications

- Flow Cytometry

Flow cytometric analysis of HEK293 cells with MAPK13 monoclonal antibody, clone R12-L (FITC) (Cat # MAB16013).

Gene Info — MAPK13

Entrez GeneID [5603](#)

Protein Accession# [O15264](#)

Gene Name MAPK13

Gene Alias MGC99536, PRKM13, SAPK4, p38delta

Gene Description mitogen-activated protein kinase 13

Omim ID [602899](#)

Gene Ontology [Hyperlink](#)

Gene Summary The protein encoded by this gene is a member of the MAP kinase family. MAP kinases act as an integration point for multiple biochemical signals, and are involved in a wide variety of cellular processes such as proliferation, differentiation, transcription regulation and development. This kinase is closely related to p38 MAP kinase, both of which can be activated by proinflammatory cytokines and cellular stress. MAP kinase kinases 3, and 6 can phosphorylate and activate this kinase. Transcription factor ATF2, and microtubule dynamics regulator stathmin have been shown to be the substrates of this kinase. [provided by RefSeq]

Other Designations OTTHUMP00000016282|mitogen-activated protein kinase p38 delta|stress-activated protein kinase 4

Pathway

- [Amyotrophic lateral sclerosis \(ALS\)](#)
- [Epithelial cell signaling in Helicobacter pylori infection](#)
- [Fc epsilon RI signaling pathway](#)
- [GnRH signaling pathway](#)

- [Leukocyte transendothelial migration](#)
- [MAPK signaling pathway](#)
- [Neurotrophin signaling pathway](#)
- [T cell receptor signaling pathway](#)
- [Toll-like receptor signaling pathway](#)
- [VEGF signaling pathway](#)

Disease

- [Cardiovascular Diseases](#)
- [Diabetes Mellitus](#)
- [Edema](#)
- [HIV Infections](#)