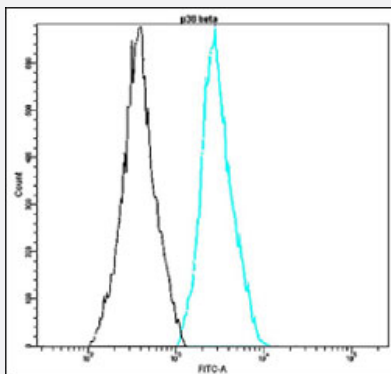


# MAPK11 monoclonal antibody, clone P12-E (FITC)

Catalog # MAB16011      Size 1000 uL

## Applications



### Flow Cytometry

Flow cytometric analysis of HEK293 cells with MAPK11 monoclonal antibody, clone P12-E (FITC) (Cat # MAB16011).

## Specification

**Product Description** Rabbit monoclonal antibody raised against synthetic peptide of human MAPK11.

**Host** Rabbit

**Reactivity** Human

**Form** Liquid

**Conjugation** FITC

**Purification** EVAC purification

**Isotype** IgG

**Recommend Usage** Flow Cytometry  
The optimal working dilution should be determined by the end user.

**Storage Buffer** In PBS (10 mg/mL BSA, 0.05% Sodium Azide).

**Storage Instruction** Store in the dark at 4°C. Avoid prolonged exposure to light. Do not freeze.

## Note

This product contains sodium azide: a POISONOUS AND HAZARDOUS SUBSTANCE which should be handled by trained staff only.

## Applications

- Flow Cytometry

Flow cytometric analysis of HEK293 cells with MAPK11 monoclonal antibody, clone P12-E (FITC) (Cat # MAB16011).

## Gene Info — MAPK11

Entrez GeneID [5600](#)

Protein Accession# [Q15759](#)

Gene Name MAPK11

Gene Alias P38B, P38BETA2, PRKM11, SAPK2, SAPK2B, p38-2, p38Beta

Gene Description mitogen-activated protein kinase 11

Omim ID [602898](#)

Gene Ontology [Hyperlink](#)

**Gene Summary** The protein encoded by this gene is a member of the MAP kinase family. MAP kinases act as an integration point for multiple biochemical signals, and are involved in a wide variety of cellular processes such as proliferation, differentiation, transcription regulation, and development. This kinase is most closely related to p38 MAP kinase, both of which can be activated by proinflammatory cytokines and environmental stress. This kinase is activated through its phosphorylation by MAP kinase kinases (MKKs), preferably by MKK6. Transcription factor ATF2/CREB2 has been shown to be a substrate of this kinase. [provided by RefSeq]

**Other Designations** OTTHUMP00000196655|mitogen-activated protein kinase p38 beta|mitogen-activated protein kinase p38-2|stress-activated protein kinase-2|stress-activated protein kinase-2b

## Pathway

- [Amyotrophic lateral sclerosis \(ALS\)](#)
- [Epithelial cell signaling in Helicobacter pylori infection](#)
- [Fc epsilon RI signaling pathway](#)
- [GnRH signaling pathway](#)

- [Leukocyte transendothelial migration](#)
- [MAPK signaling pathway](#)
- [Neurotrophin signaling pathway](#)
- [T cell receptor signaling pathway](#)
- [Toll-like receptor signaling pathway](#)
- [VEGF signaling pathway](#)

## Disease

- [Cardiovascular Diseases](#)
- [Diabetes Mellitus](#)
- [Edema](#)
- [HIV Infections](#)