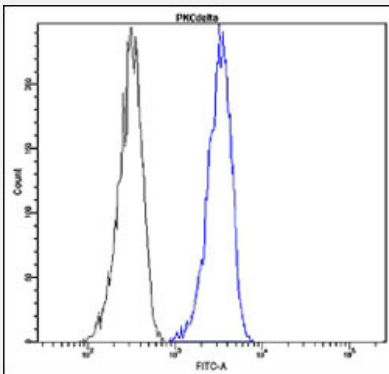


PRKCD monoclonal antibody, clone R20-F (FITC)

Catalog # MAB15994 Size 1000 uL

Applications



Flow Cytometry

Flow cytometric analysis of human peripheral blood lymphocytes with PRKCD monoclonal antibody, clone R20-F (FITC) (Cat # MAB15994).

Specification

Product Description	Rabbit monoclonal antibody raised against synthetic peptide of human PRKCD.
Host	Rabbit
Reactivity	Human
Form	Liquid
Conjugation	FITC
Purification	EVAC purification
Isotype	IgG
Recommend Usage	Flow Cytometry The optimal working dilution should be determined by the end user.
Storage Buffer	In PBS (10 mg/mL BSA, 0.05% Sodium Azide).
Storage Instruction	Store in the dark at 4°C. Avoid prolonged exposure to light. Do not freeze.

Note

This product contains sodium azide: a POISONOUS AND HAZARDOUS SUBSTANCE which should be handled by trained staff only.

Applications

- Flow Cytometry

Flow cytometric analysis of human peripheral blood lymphocytes with PRKCD monoclonal antibody, clone R20-F (FITC) (Cat # MAB15994).

Gene Info — PRKCD

Entrez GeneID [5580](#)

Protein Accession# [Q05655](#)

Gene Name PRKCD

Gene Alias MAY1, MGC49908, PKCD, nPKC-delta

Gene Description protein kinase C, delta

Omim ID [176977](#)

Gene Ontology [Hyperlink](#)

Gene Summary

Protein kinase C (PKC) is a family of serine- and threonine-specific protein kinases that can be activated by calcium and the second messenger diacylglycerol. PKC family members phosphorylate a wide variety of protein targets and are known to be involved in diverse cellular signaling pathways. PKC family members also serve as major receptors for phorbol esters, a class of tumor promoters. Each member of the PKC family has a specific expression profile and is believed to play distinct roles in cells. The protein encoded by this gene is one of the PKC family members. Studies both in human and mice demonstrate that this kinase is involved in B cell signaling and in the regulation of growth, apoptosis, and differentiation of a variety of cell types. Alternatively spliced transcript variants encoding the same protein have been observed. [provided by RefSeq]

Other Designations protein kinase C delta VIII

Pathway

- [Chemokine signaling pathway](#)
- [Fc epsilon RI signaling pathway](#)
- [Fc gamma R-mediated phagocytosis](#)

- [GnRH signaling pathway](#)
- [Neurotrophin signaling pathway](#)
- [Tight junction](#)
- [Type II diabetes mellitus](#)
- [Vascular smooth muscle contraction](#)

Disease

- [Cardiovascular Diseases](#)
- [Diabetes Mellitus](#)
- [Edema](#)
- [Genetic Predisposition to Disease](#)
- [Tobacco Use Disorder](#)