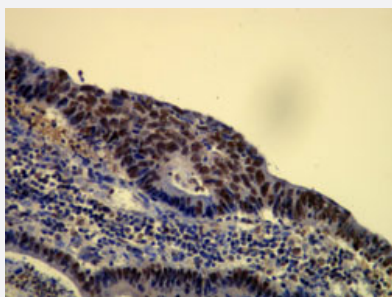


CHAF1B monoclonal antibody, clone E17-L

Catalog # MAB15984 Size 100 uL

Applications



Immunohistochemistry (Formalin/PFA-fixed paraffin-embedded sections)

Immunohistochemical staining (Formalin-fixed paraffin-embedded sections) of human colon adenocarcinoma with CHAF1B monoclonal antibody, clone E17-L (Cat # MAB15984).

Specification

Product Description	Rabbit monoclonal antibody raised against synthetic peptide of human CHAF1B.
Immunogen	A synthetic peptide corresponding to C-terminus of human CHAF1B.
Host	Rabbit
Reactivity	Human
Form	Liquid
Purification	EVAC purification
Recommend Usage	Immunohistochemistry (Formalin/PFA-fixed paraffin-embedded sections) (1:100-1:200) The optimal working dilution should be determined by the end user.
Storage Buffer	In 20 mM Tris-HCl buffer, pH 8.0 (20 mg/mL BSA, 0.05% Sodium Azide).
Storage Instruction	Store at 4°C. Do not freeze.
Note	This product contains sodium azide: a POISONOUS AND HAZARDOUS SUBSTANCE which should be handled by trained staff only.

Applications

- Immunohistochemistry (Formalin/PFA-fixed paraffin-embedded sections)

Immunohistochemical staining (Formalin-fixed paraffin-embedded sections) of human colon adenocarcinoma with CHAF1B monoclonal antibody, clone E17-L (Cat # MAB15984).

Gene Info — CHAF1B

Entrez GeneID [8208](#)

Protein Accession# [Q13112](#)

Gene Name CHAF1B

Gene Alias CAF-1, CAF-IP60, CAF1, CAF1A, CAF1P60, MPHOSPH7, MPP7

Gene Description chromatin assembly factor 1, subunit B (p60)

Omim ID [601245](#)

Gene Ontology [Hyperlink](#)

Gene Summary Chromatin assembly factor I (CAF-I) is required for the assembly of histone octamers onto newly-replicated DNA. CAF-I is composed of three protein subunits, p50, p60, and p150. The protein encoded by this gene corresponds to the p60 subunit and is required for chromatin assembly after replication. The encoded protein is differentially phosphorylated in a cell cycle-dependent manner. In addition, it is normally found in the nucleus except during mitosis, when it is released into the cytoplasm. This protein is a member of the WD-repeat HIR1 family and may also be involved in DNA repair. [provided by RefSeq]

Other Designations CAF-1 subunit B|CAF-I 60 kDa subunit|M-phase phosphoprotein 7|chromatin assembly factor 1 subunit B|chromatin assembly factor I p60 subunit|human chromatin assembly factor-I p60 subunit