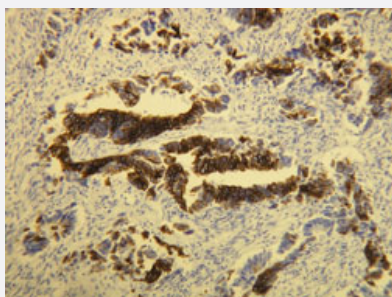


KRT20 monoclonal antibody, clone E19-I

Catalog # MAB15971 Size 100 uL

Applications



Immunohistochemistry (Formalin/PFA-fixed paraffin-embedded sections)

Immunohistochemical staining (Formalin-fixed paraffin-embedded sections) of human colon adenocarcinoma with KRT20 monoclonal antibody, clone E19-I (Cat # MAB15971).

Specification

Product Description	Rabbit monoclonal antibody raised against synthetic peptide of human KRT20.
Immunogen	A synthetic peptide corresponding to C-terminus of human KRT20.
Host	Rabbit
Reactivity	Human
Form	Liquid
Purification	EVAC purification
Recommend Usage	Immunohistochemistry (Formalin/PFA-fixed paraffin-embedded sections) (1:100-1:200) The optimal working dilution should be determined by the end user.
Storage Buffer	In 20 mM Tris-HCl buffer, pH 8.0 (20 mg/mL BSA, 0.05% Sodium Azide).
Storage Instruction	Store at 4°C. Do not freeze.
Note	This product contains sodium azide: a POISONOUS AND HAZARDOUS SUBSTANCE which should be handled by trained staff only.

Applications

- Immunohistochemistry (Formalin/PFA-fixed paraffin-embedded sections)

Immunohistochemical staining (Formalin-fixed paraffin-embedded sections) of human colon adenocarcinoma with KRT20 monoclonal antibody, clone E19-I (Cat # MAB15971).

Gene Info — KRT20

Entrez GeneID [54474](#)

Protein Accession# [P35900](#)

Gene Name KRT20

Gene Alias CD20, CK20, K20, KRT21, MGC35423

Gene Description keratin 20

Omim ID [608218](#)

Gene Ontology [Hyperlink](#)

Gene Summary The protein encoded by this gene is a member of the keratin family. The keratins are intermediate filament proteins responsible for the structural integrity of epithelial cells and are subdivided into cytokeratins and hair keratins. The type I cytokeratins consist of acidic proteins which are arranged in pairs of heterotypic keratin chains. This cytokeratin is a major cellular protein of mature enterocytes and goblet cells and is specifically expressed in the gastric and intestinal mucosa. The type I cytokeratin genes are clustered in a region of chromosome 17q12-q21. [provided by RefSeq]

Other Designations cytokeratin 20|keratin, type I cytoskeletal 20

Disease

- [Genetic Predisposition to Disease](#)
- [Growth Disorders](#)